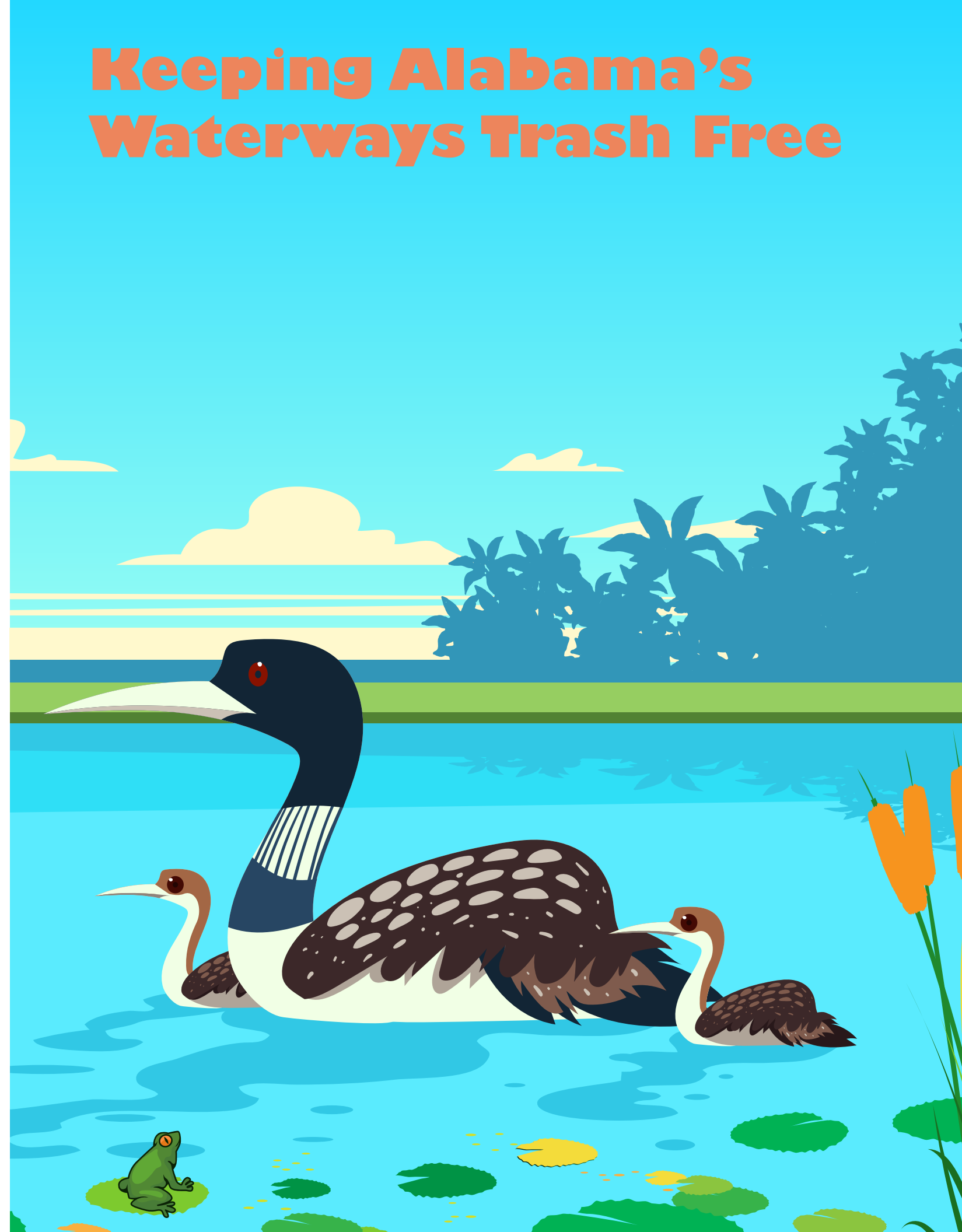


“Our mission at ADEM is to assure for all citizens of the State a safe, healthful, and productive environment.”

-ADEM



# Keeping Alabama's Waterways Trash Free

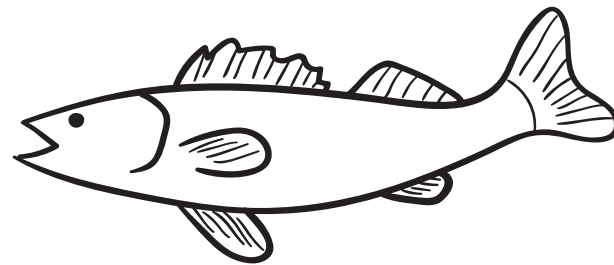




Did you know that throwing trash out the car window ends up in rivers and the oceans? Trash like this can wash down storm drains that connect from the road to the river and ends up polluting the oceans. This can harm animals in the water.

#### DID YOU KNOW?

100,000 marine creatures a year die from plastic entanglement and those are the only ones found!



Always remember to put your trash in a trash can so that litter does not harm wildlife, and does not end up in waterways harming fish and turtles.



Pictured below is a river in Alabama. Circle the items that **do not** belong in the river and place them in the correct location.

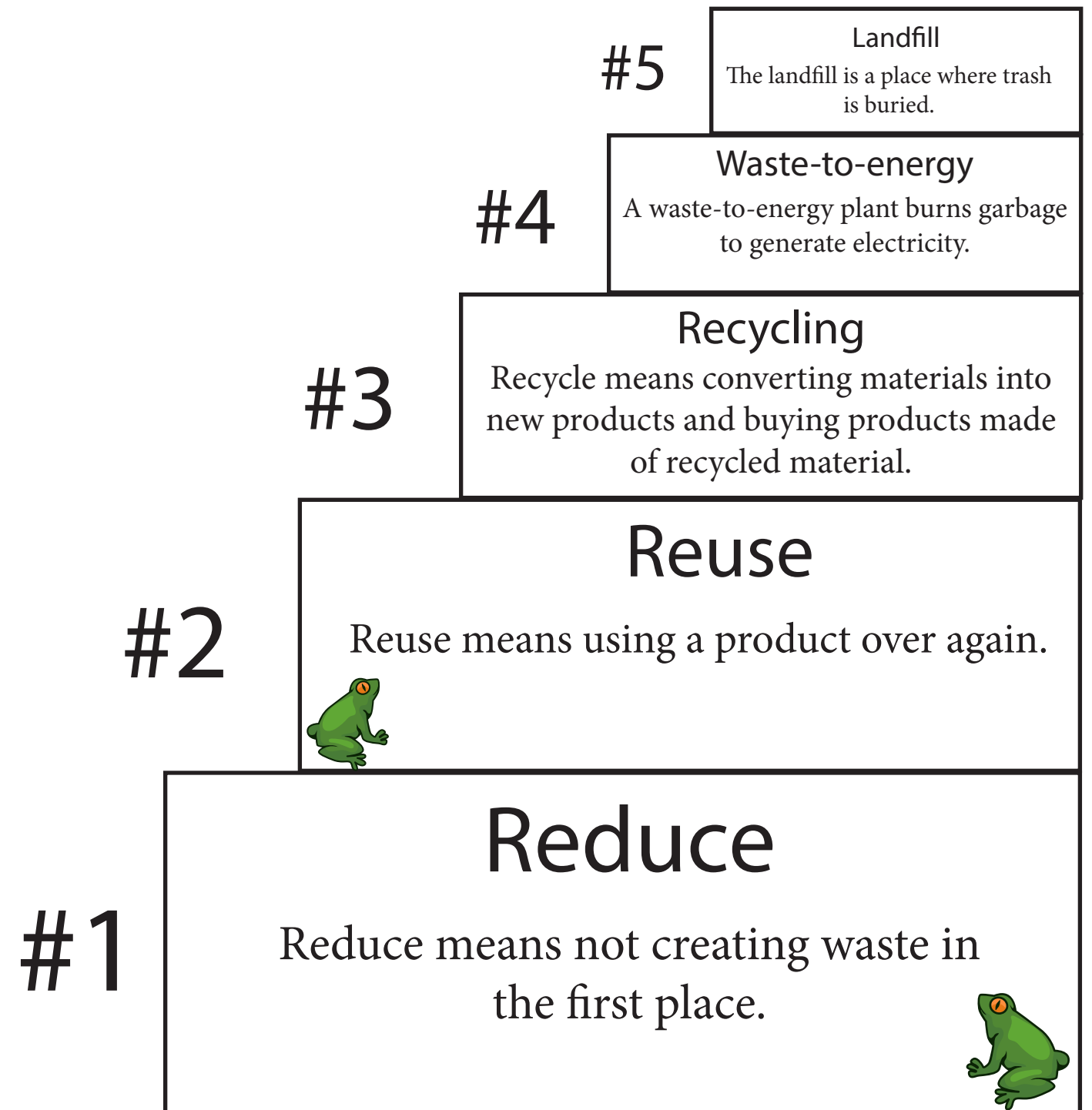


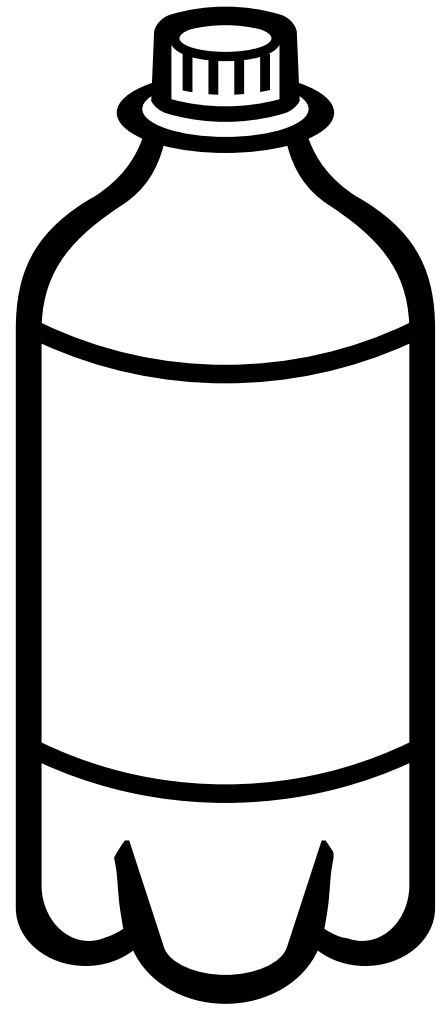
## What happens to my trash?

Trash in waterways is harmful to the environment. Always put your trash in a trash can or recycle your plastic and cans.

Here are the 5 steps for good waste (trash) management.

The goal is to reduce, reuse, and recycle as much trash as possible, then burn the remainder to generate electricity





## Plastic Bottle Challenge

Pictured above is a water bottle. This water bottle was recovered from the Sipsy River and here at ADEM we thought about some creative uses for it. Here's what we thought of:



1. Animal Feeder
2. Piggy Bank
3. Bird House



Now it's your turn! What can you use a plastic bottle for?

---

---

---

Show your coloring skills!

