

## McNeill, Catherine

---

**From:** Eric Vichich - NOAA Federal <eric.vichich@noaa.gov>  
**Sent:** Thursday, September 8, 2022 12:35 PM  
**To:** Brown, Scott; Mobile Coastal Mail  
**Subject:** GulfCorps Year 6 - AL - CZMA/ACAMP Federal Consistency  
**Attachments:** AL\_Y6\_Detailed\_Summary.pdf; AL\_Y6\_Maps.pdf

Good Afternoon,

NOAA's GulfCorps program is planning its sixth year of habitat restoration activities in Alabama. Attached please find a summary of newly proposed project locations and/or activities for this year as well as maps for these locations.

NOAA has determined that the proposed activities are consistent with the Alabama Coastal Area Management Program and requests your concurrence with that determination.

Please let me know if you have any questions or need additional information.

Thank you,  
Eric

Eric J. Vichich  
Marine Habitat Resource Specialist  
NOAA Fisheries | Office of Habitat Conservation | Restoration Center  
(727) 238-5774

# Alabama Year 6 GulfCorps Projects Summary

## Introduction

GulfCorps hires and trains local young people to conduct coastal habitat restoration in Alabama. These projects were provided to us in collaboration with the Governor's office and other partners. There are seven new locations this year and three previously approved project locations are adding additional land parcels. **New or modified project locations and/or activities are indicated in red text.**

## Standard Activities:

GulfCorps crews are now providing a list of standard crew activities that could be undertaken at each project site. Compliance reviews and consultations will now assume all of these standard activities are possible for all sites. These standard activities include:

**Invasive Species Management:** Mechanical treatment with saws and/or hand tools, and/or chemical treatment with herbicide hand applicators or backpack sprayers. Foliar application used for grass/herbaceous plants. Hack-and-squirt used for woody plants.

**Wetland Native Vegetation Planting:** Planting native wetland vegetation with hand tools.

**Reef Preparation:** Recycling oyster shells, bagging shell/reef material, bundling trees.

**Wetland Fire Preparation:** Fire line maintenance and selected vegetation thinning/removal with hand tools. Activities will be directed by land manager; GulfCorps crews will not select areas for treatment or use heavy equipment.

**Wetland Prescribed Fire:** Participation in partner-led prescribed fire application. Partner (land manager) acts as burn boss, selects areas, determines timing, and obtains necessary burn permits/authorizations.

**Wetland Debris Removal:** Storm debris cleanup and litter removal using hand tools (no heavy equipment)

**Wetland Vegetation Management:** Propagating, collecting, growing, harvesting, and transplanting wetland plants. Harvesting/transplanting would only take wetland plants from nurseries or approved donor sites where extraction is authorized.

**Planting Native Upland Vegetation:** Planting native vegetation with hand tools in locations/spacing dictated by partner/land manager.

**Upland Vegetation Management:** Propagating, collecting, growing, harvesting, and transplanting plants. Harvesting/transplanting would only take plants from nurseries or approved donor sites where extraction is authorized.

**Upland Fire Preparation:** Fire line maintenance and selected vegetation thinning/removal with hand tools. Activities will be directed by land manager; GulfCorps crews will not select areas for treatment or use heavy equipment.

**Upland Prescribed Fire:** Participation in partner-led prescribed fire application. Partner (land manager) acts as burn boss, selects areas, determines timing, and obtains necessary burn permits/authorizations.

**Upland Debris Removal:** Storm debris cleanup and litter removal using hand tools (no heavy equipment).

**Facility Vegetation Management:** Clearing, removing, or trimming vegetation around facilities/amenities.

**Trail Maintenance:** Maintenance of established trails to include vegetation management, mulching, leveling with hand tools, and marking.

**Boundary Marking/Maintenance:** Marking boundary lines with signs, and fence/border maintenance.

**Amenity Installation/Maintenance:** Installation, maintenance/repair, and removal of amenities/structures (boardwalks, piers, decks, wildlife nesting boxes, benches, etc.) as directed by partner/land manager.

**Survey/Mapping:** GPS mapping of plants/communities, wildlife sightings/evidence, habitat types, geological features, elevation, etc.

**Water Quality Monitoring:** Sample collection, testing, and reporting activities for basic parameters like temperature, dissolved oxygen, pH, flow, etc.

**Outreach and Education:** Creating/distributing outreach materials, conducting people/information surveys, supporting/participating in volunteer events (Earth Day, Arbor Day, etc.).

## Project Locations

### **AL1-1 Weeks Bay NERR Stewardship**

This previously approved project **is adding additional land parcels – all standard GulfCorps activities.**

### **AL1-2 Weeks Bay Foundation**

This previously approved project **is adding additional land parcels. The Weeks Bay Foundation is now the South Alabama Land Trust and they are adding land beyond Weeks Bay to their portfolio – all standard GulfCorps activities.**

### **AL1-3o Little River SOA Boundaries**

**New location – all standard GulfCorps activities.**

### **AL1-3p Red Hills WMA**

**New location – all standard GulfCorps activities.**

### **AL1-6h Brookley Waterfront Park**

**New location – all standard GulfCorps activities.**

### **AL1-8a City of Orange Beach Stewardship**

This previously approved project location **is adding additional land parcels – all standard GulfCorps activities.**

### **AL1-11h Chickasabogue Park**

**New location – all standard GulfCorps activities.**

### **AL1-11i River Delta Park**

**New location – all standard GulfCorps activities.**

### **AL1-11j Escatawpa Hollow Park**

**New location – all standard GulfCorps activities.**

### **AL1-11k Bayfront Park**

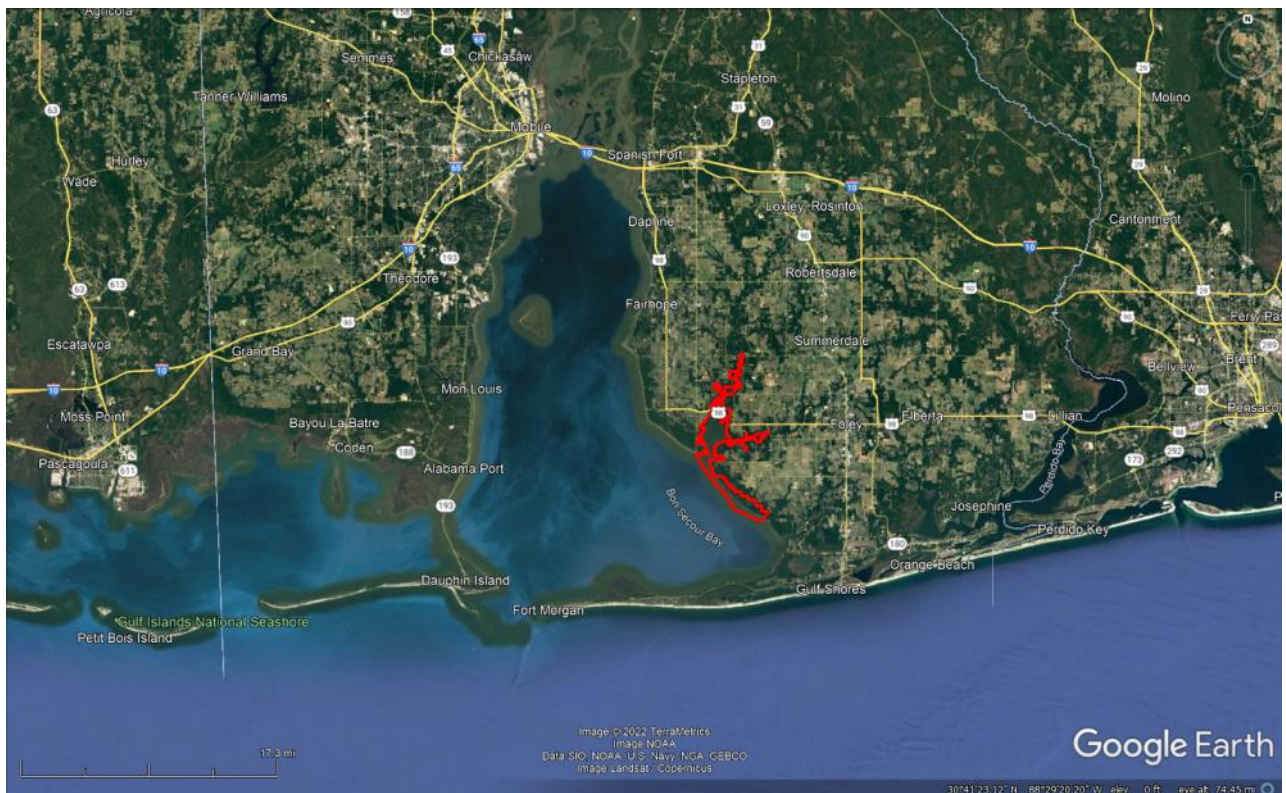
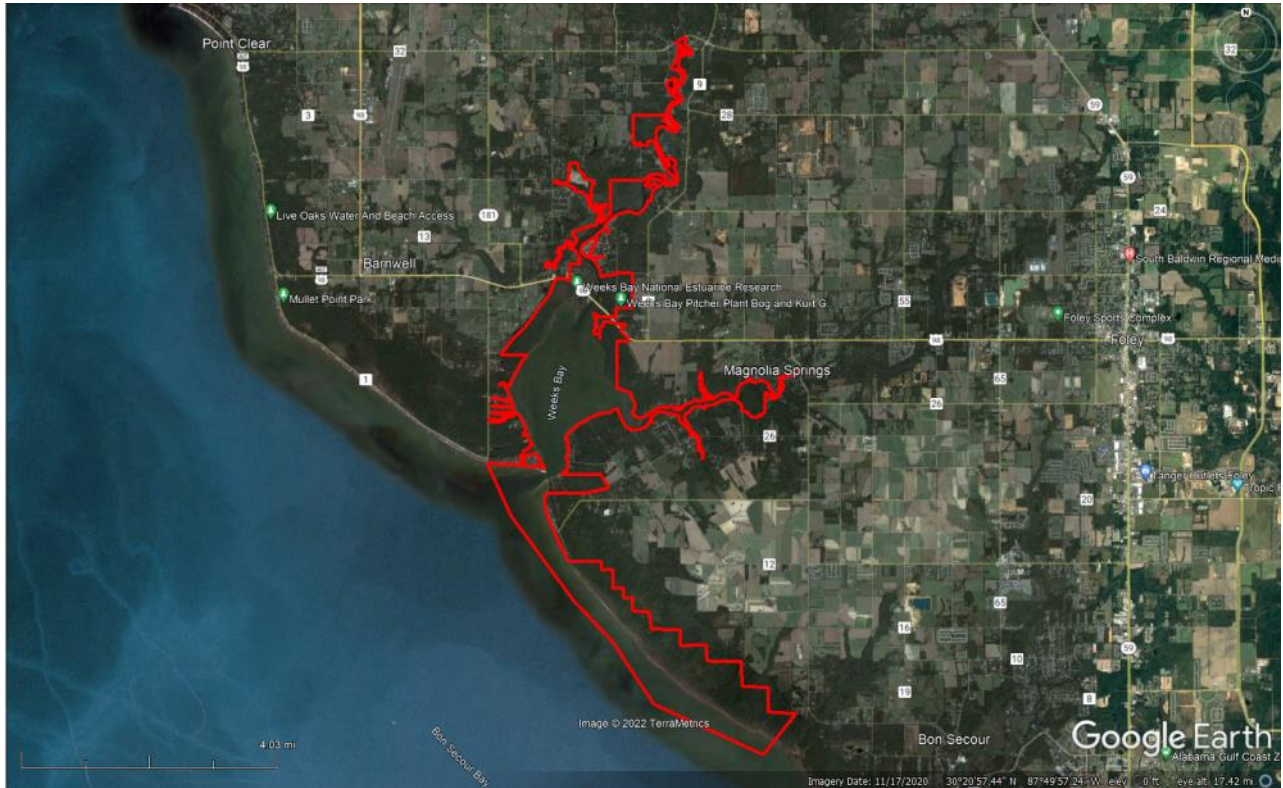
**New location – all standard GulfCorps activities.**



**NOAA**  
**FISHERIES**

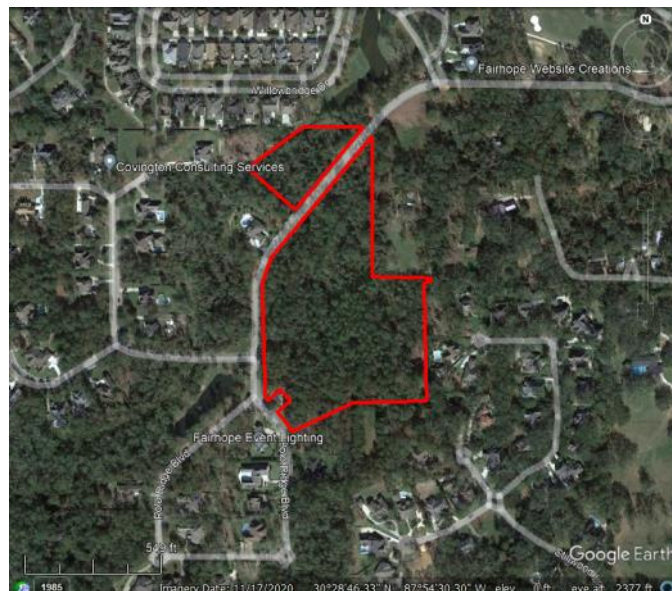
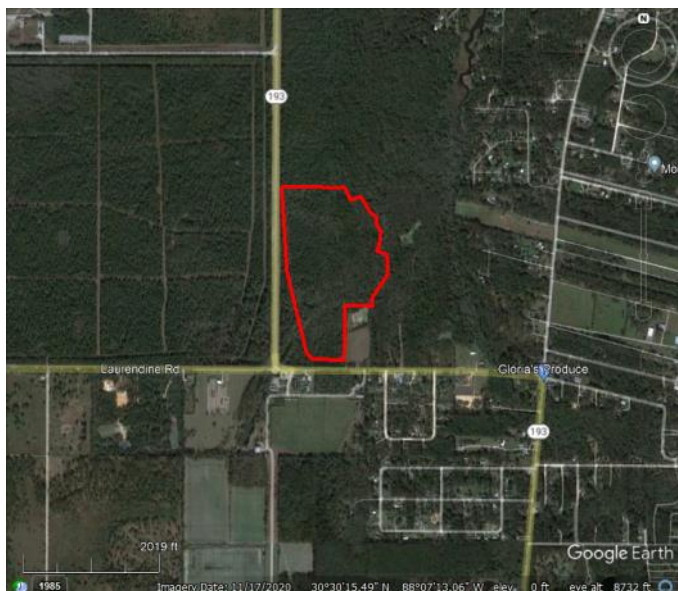
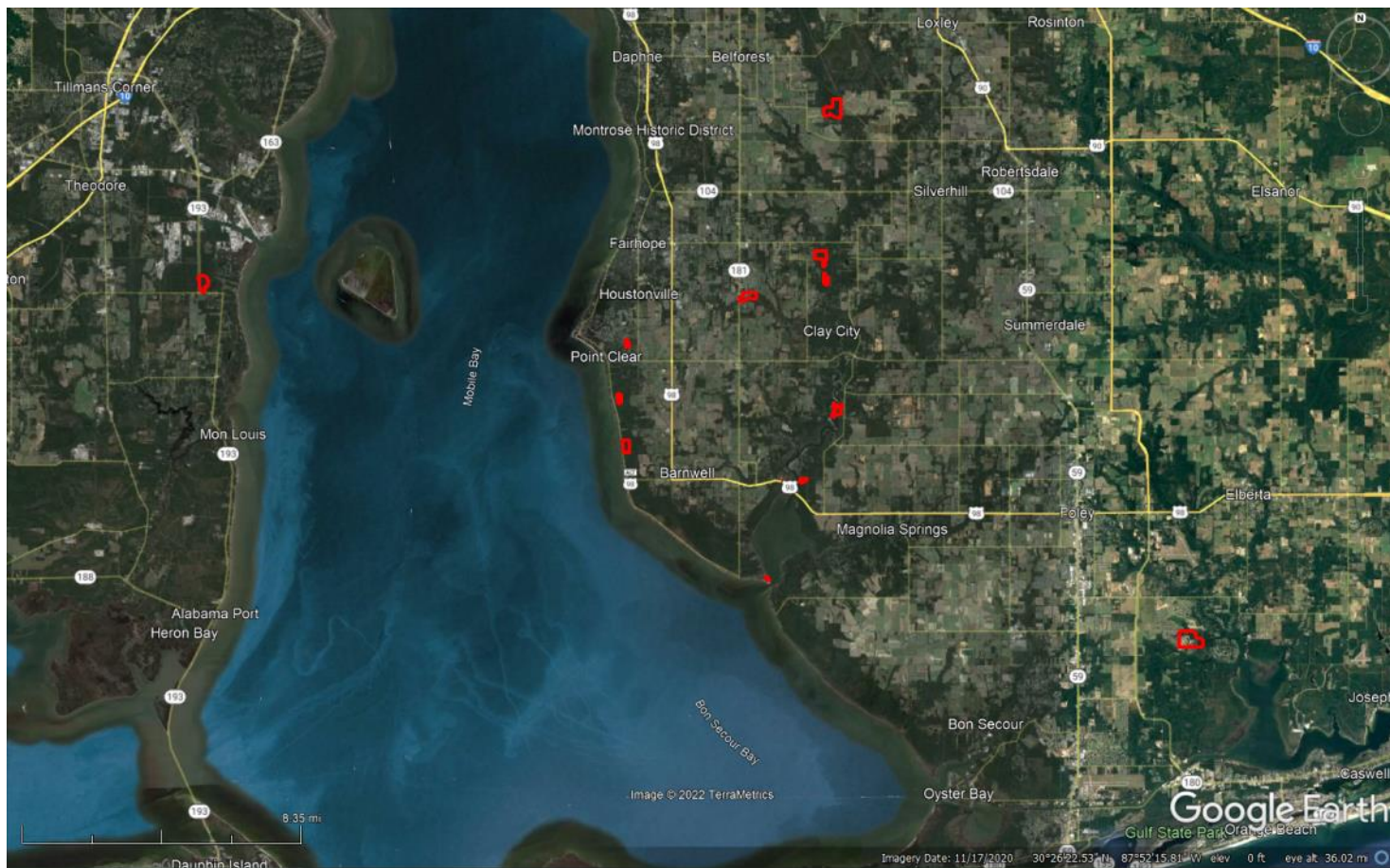
# Figure 1

## AL1-1 Weeks Bay NERR Stewardship



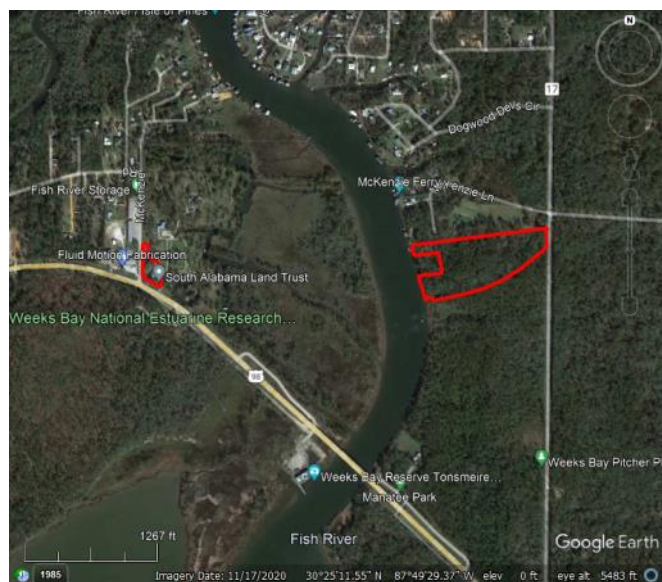
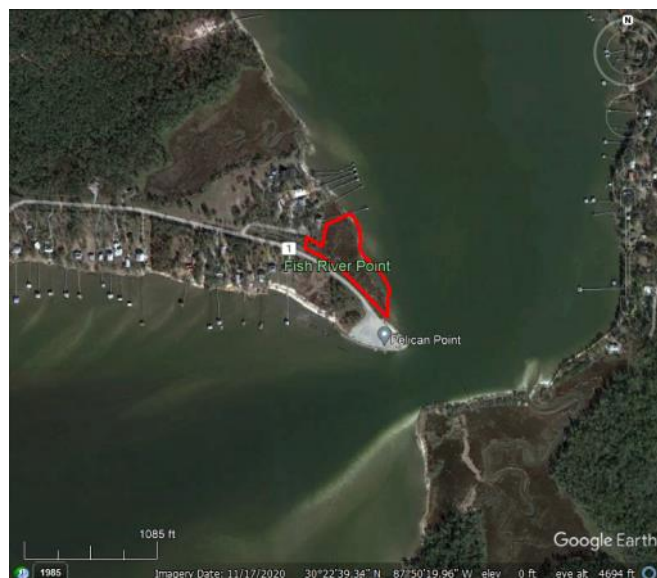
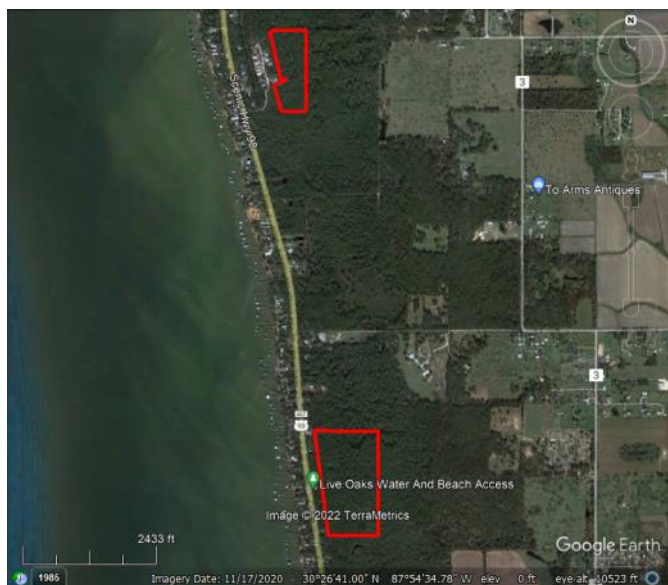
## Figure 2

### AL1-2 Weeks Bay Foundation Stewardship



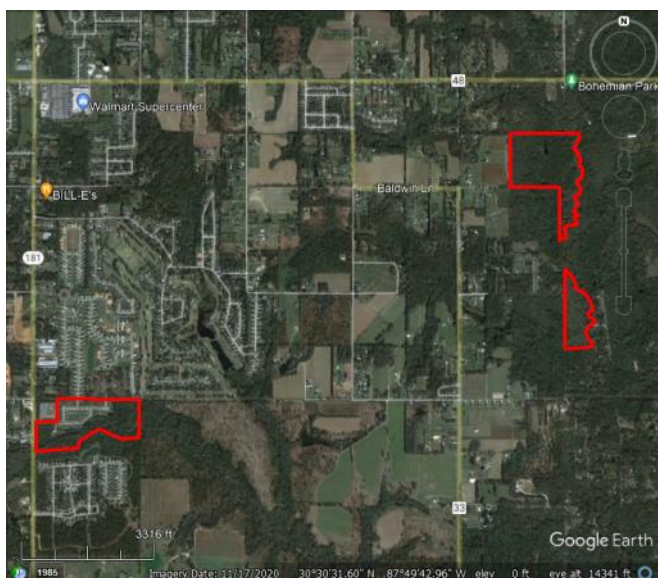
## Figure 2 (Cont'd)

### AL1-2 Weeks Bay Foundation Stewardship



## Figure 2 (Cont'd)

### AL1-2 Weeks Bay Foundation Stewardship

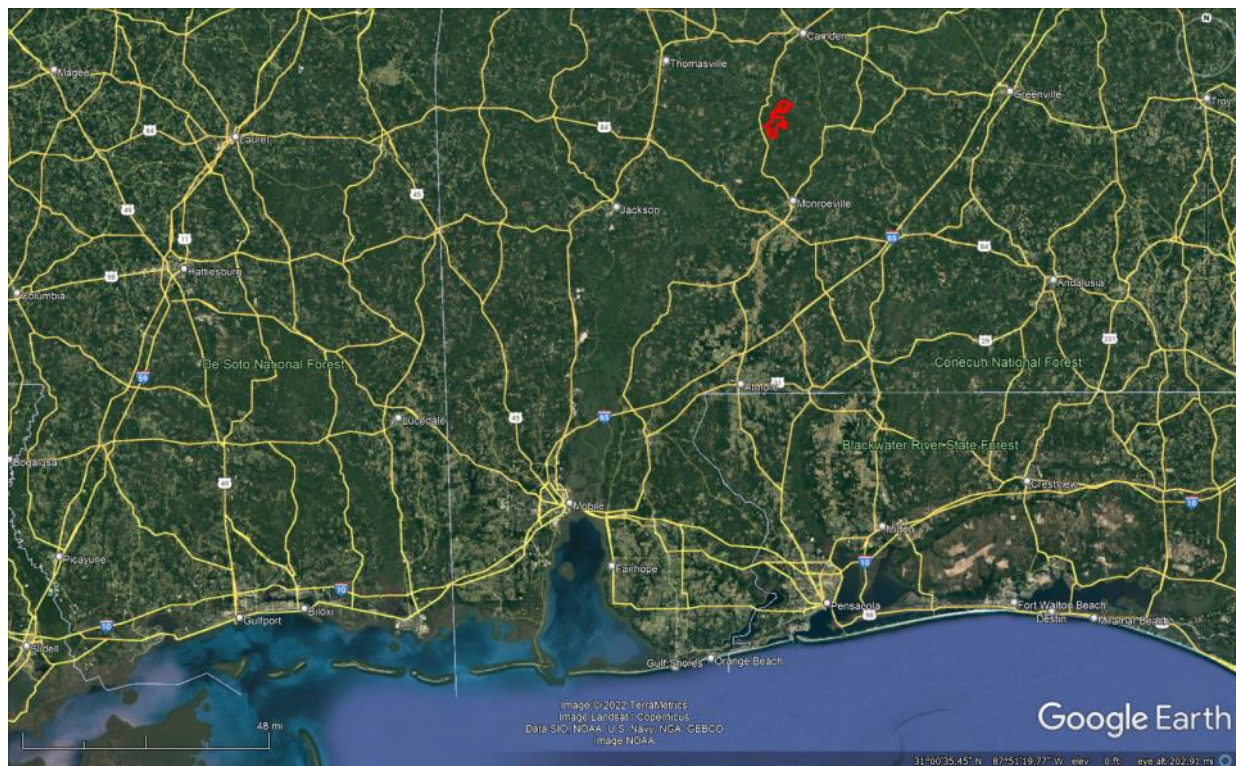
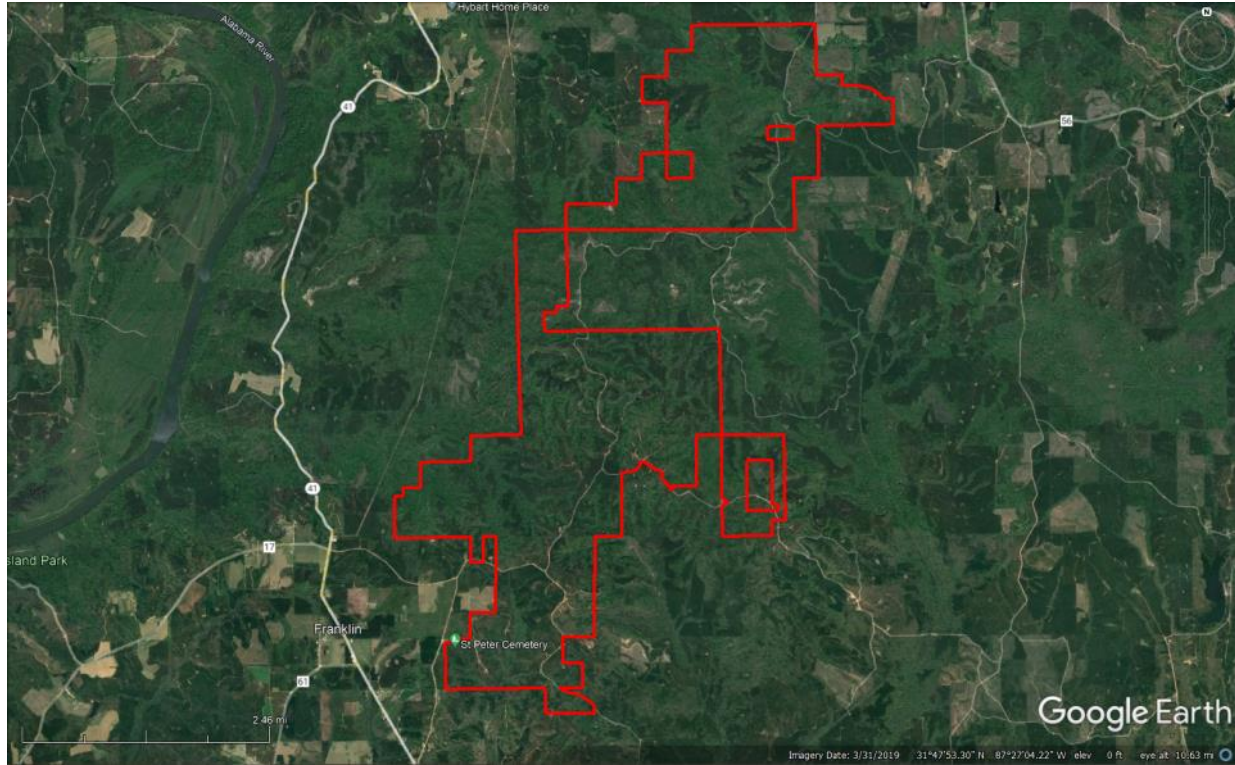




**NOAA**  
**FISHERIES**

### Figure 3

AL1-3o Little River SOA



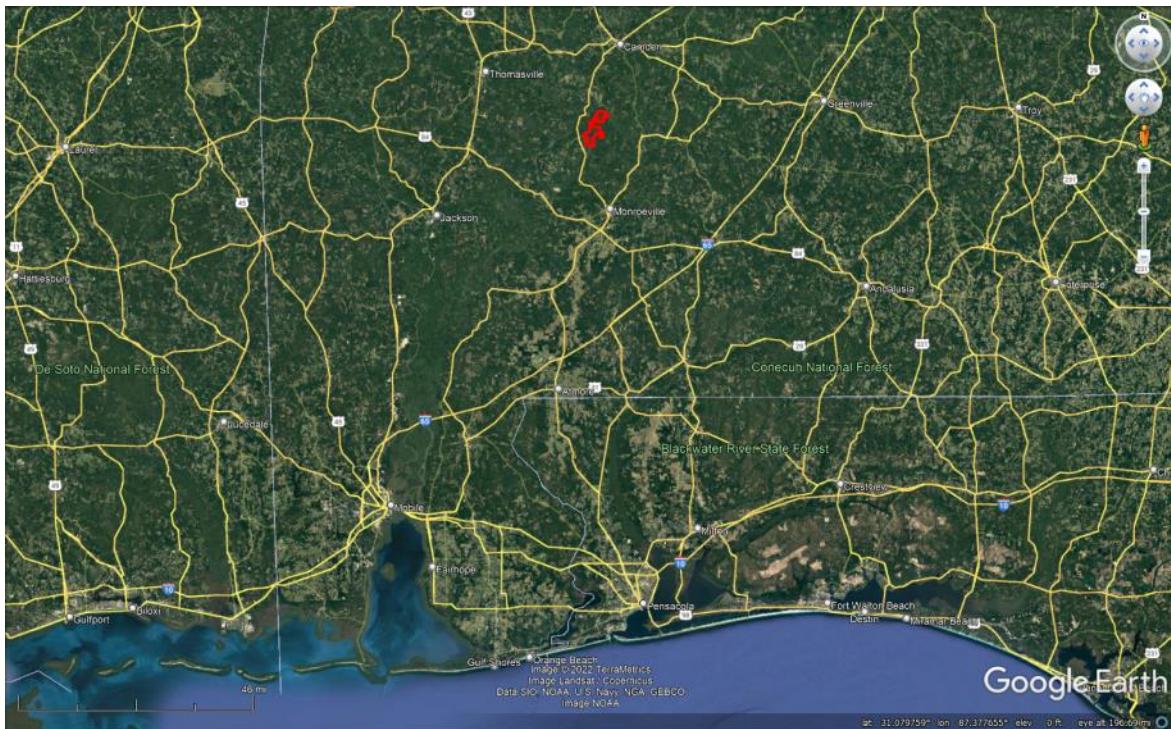
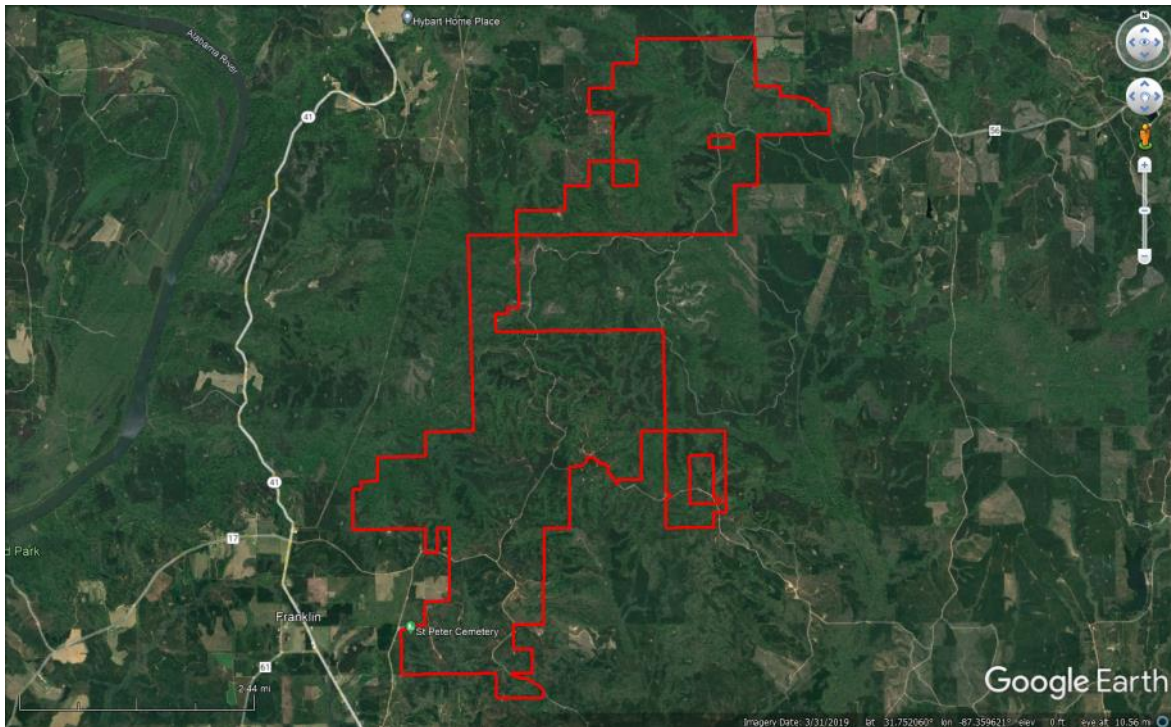


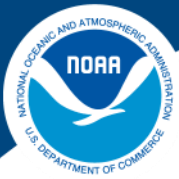


**NOAA**  
**FISHERIES**

## Figure 4

AL1-3p Red Hills SOA Boundaries

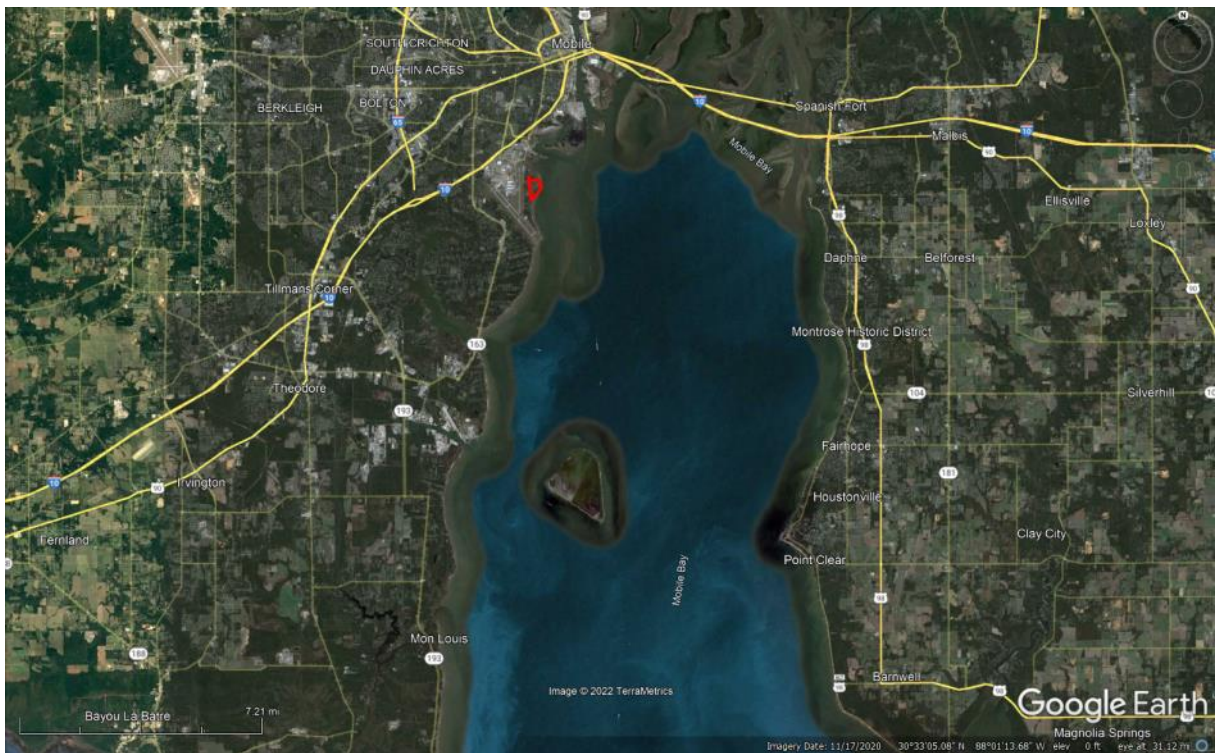
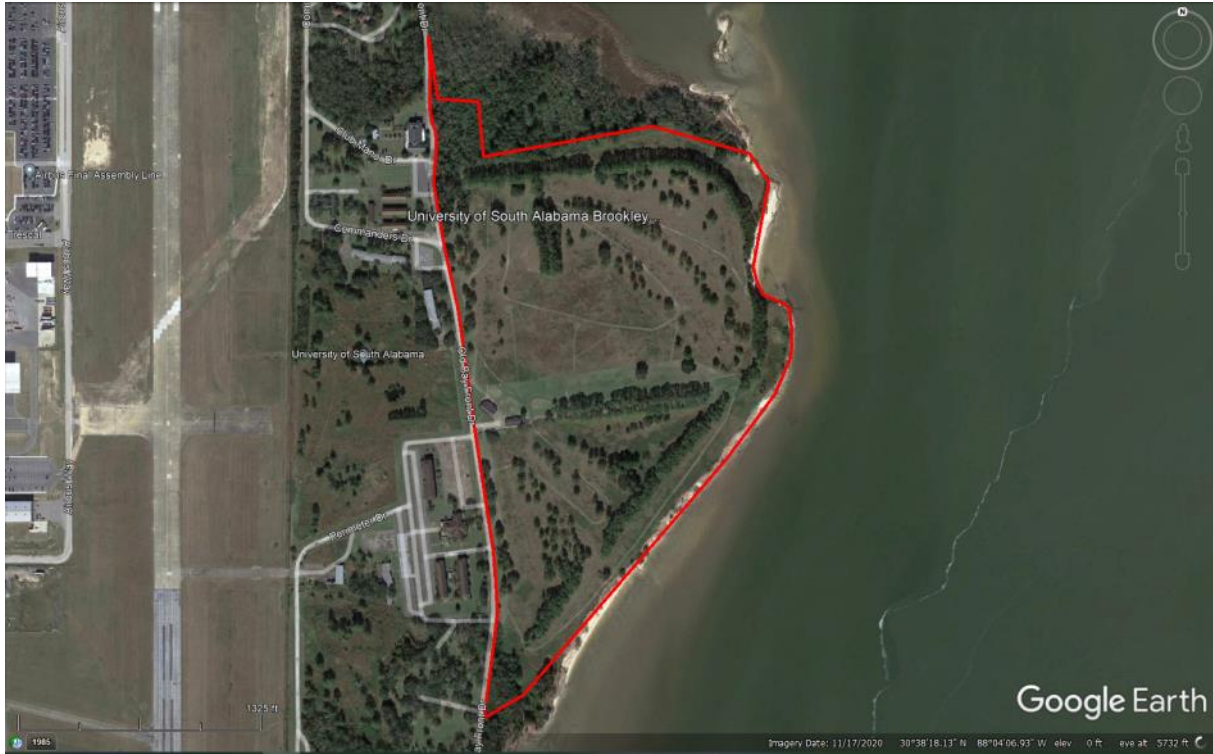


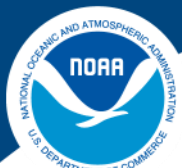


**NOAA**  
**FISHERIES**

# Figure 5

## AL1-6h Brookley Waterfront Park

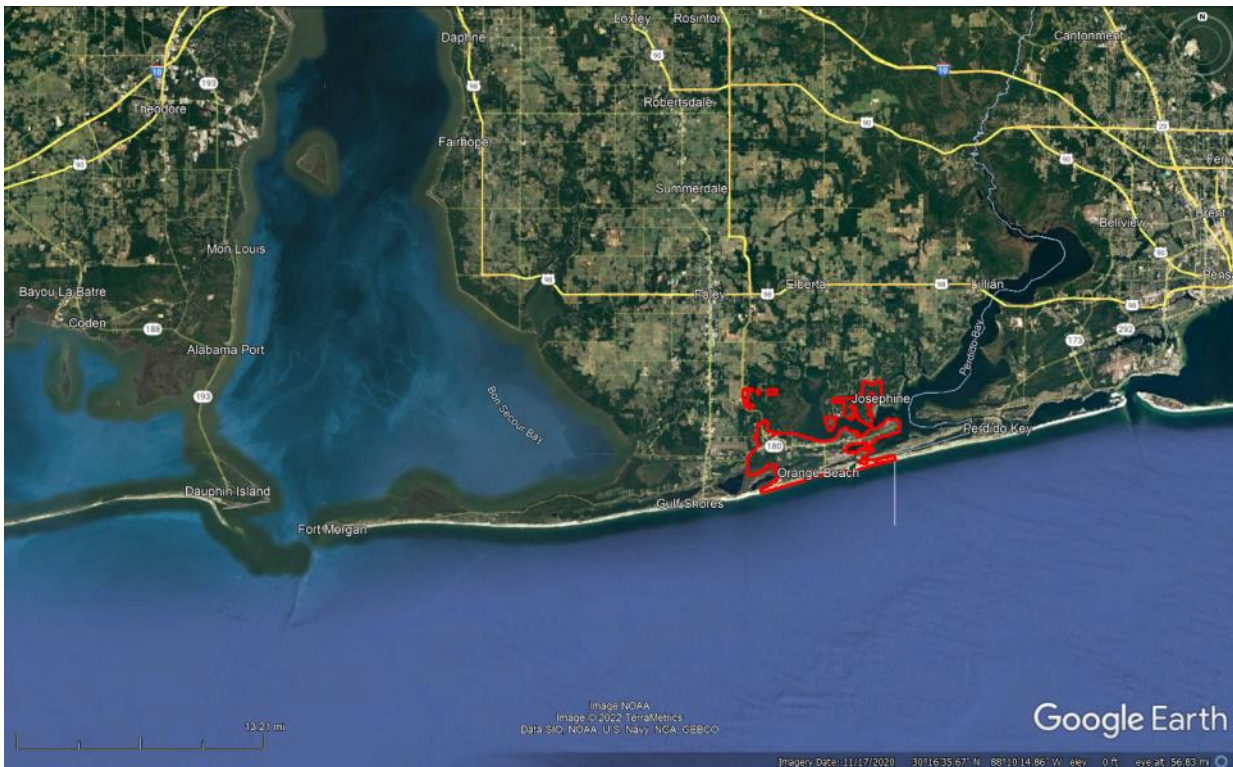
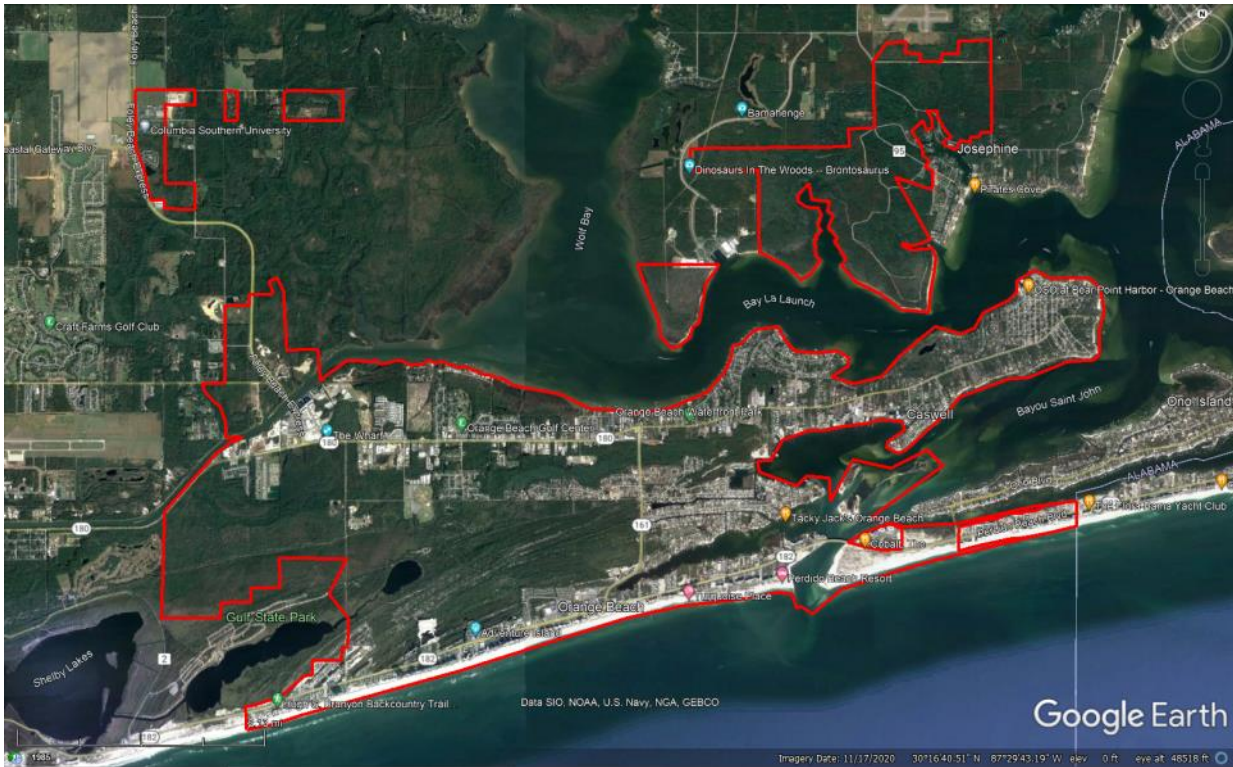




**NOAA**  
**FISHERIES**

# Figure 6

## AL1-8a City of Orange Beach Stewardship

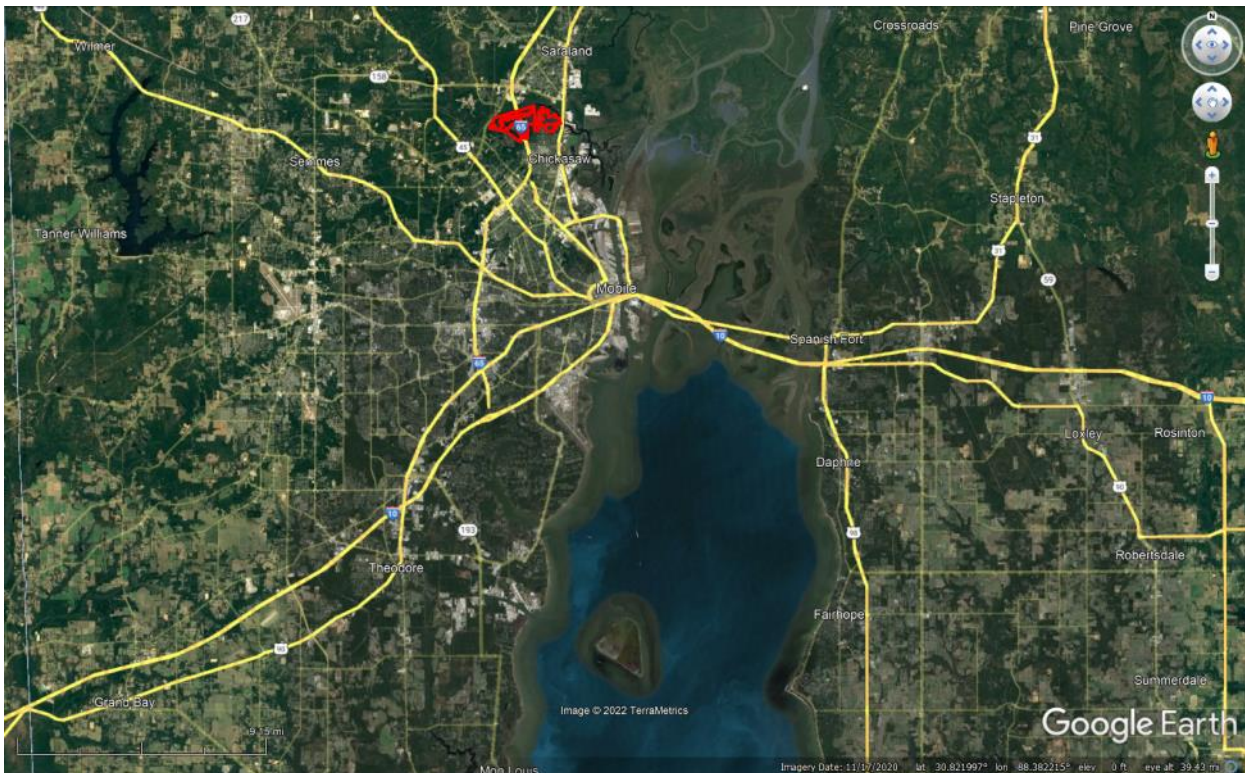




**NOAA**  
**FISHERIES**

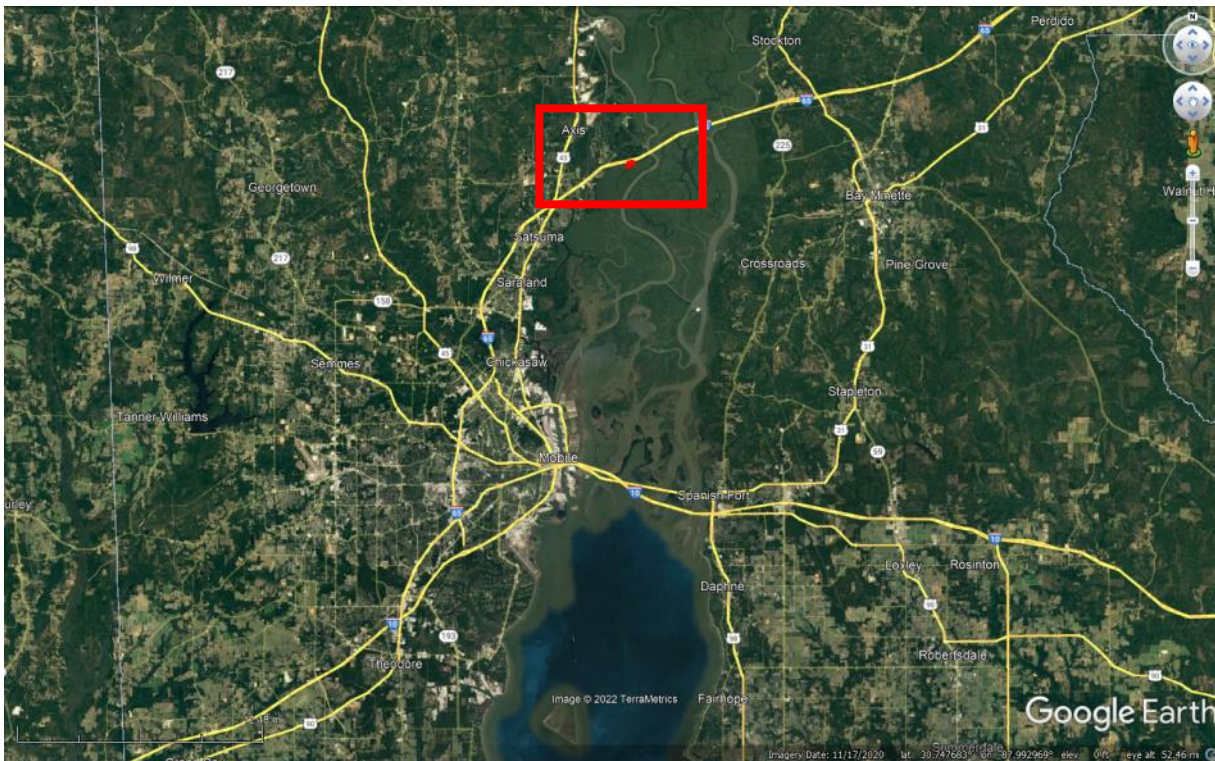
# Figure 7

## AL1-11h Chickasabogue Park



# Figure 8

## AL1-11i River Delta Park

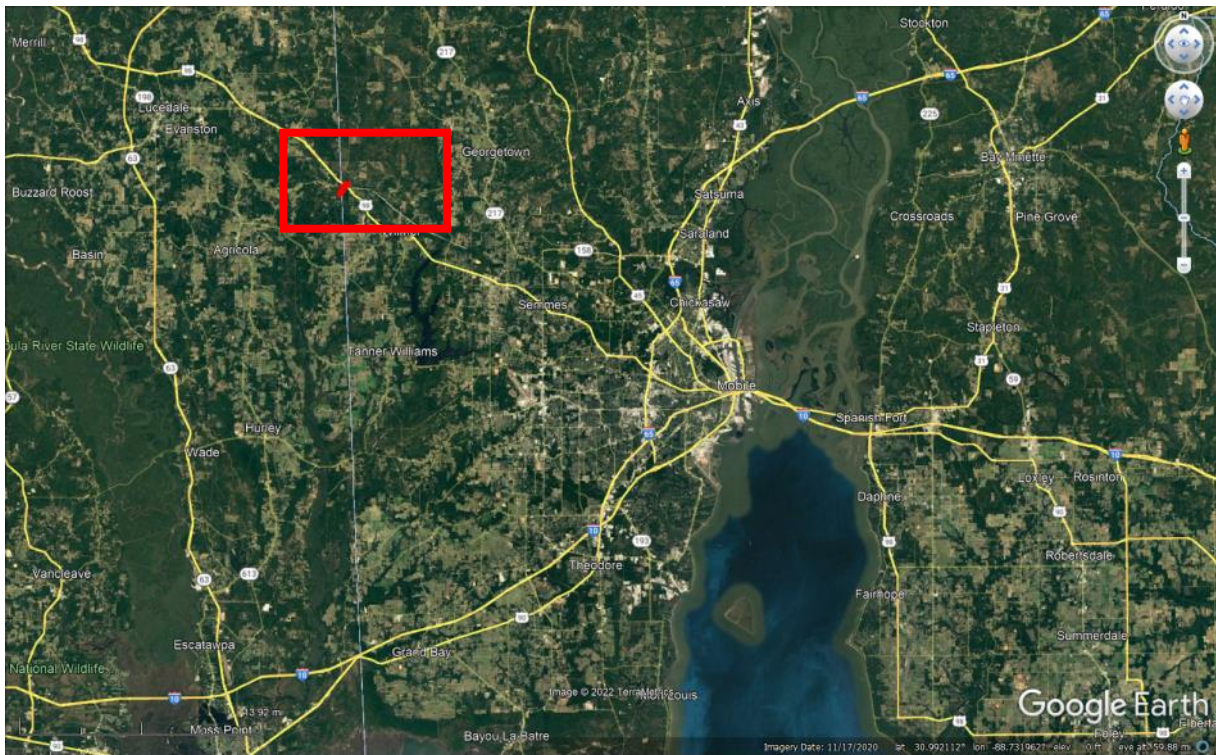




**NOAA**  
**FISHERIES**

# Figure 9

## AL1-11j Escatawpa Hollow Park



# Figure 10

## AL1-11k Bayfront Park

