

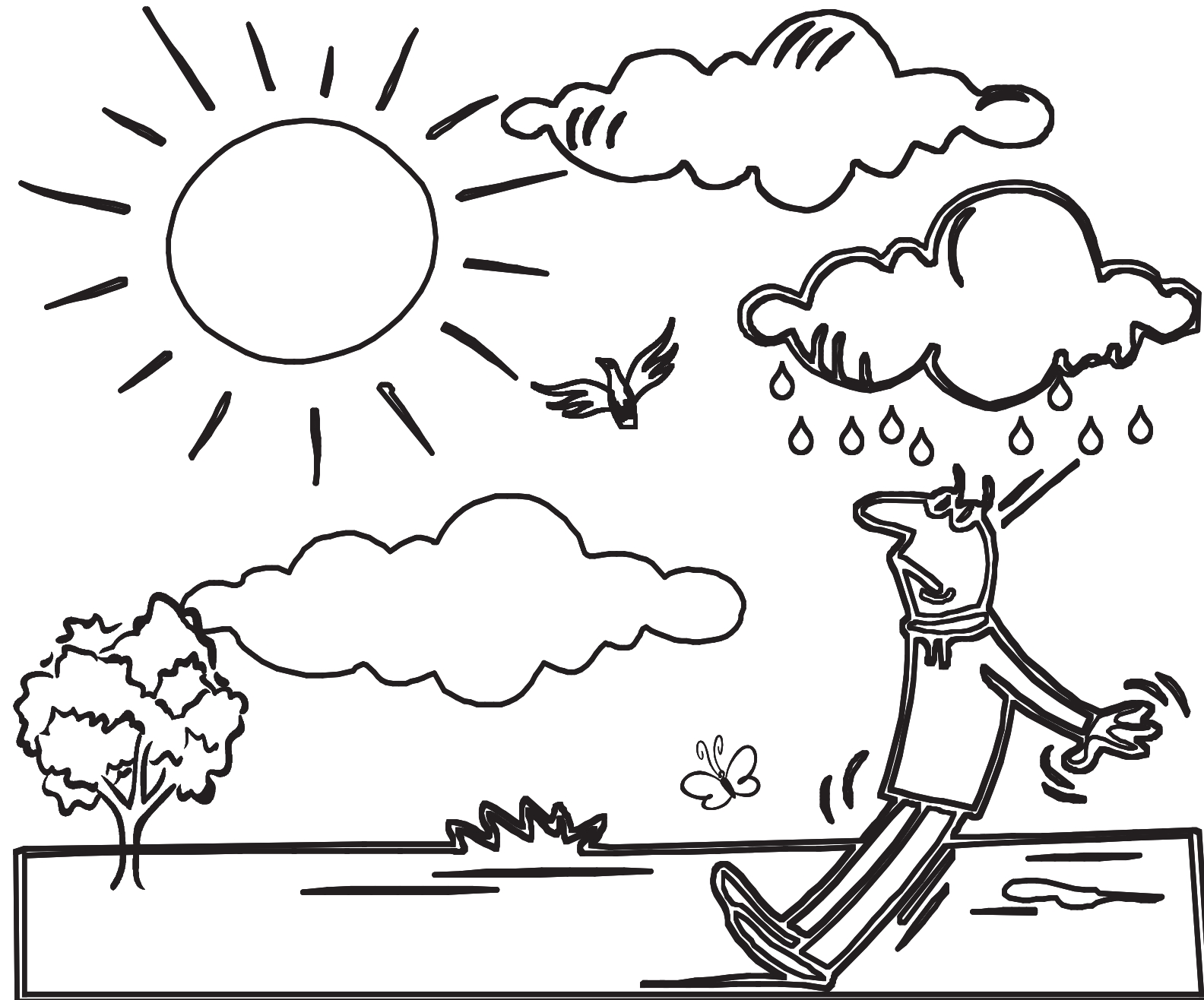
# *Thanks for Protecting Alabama's Environment*

# PROTECTING ALABAMA'S ENVIRONMENT

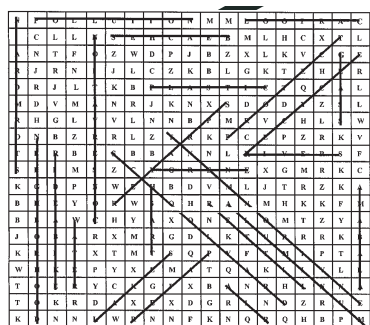
Coloring and Activities Book



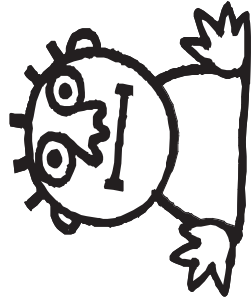
HOW CAN I HELP?



Answers from Word Search



# Taking Care of the Environment Every Day



Keep track of all the good things you do for Alabama. Draw a star beside each good deed you do for Alabama. Can you think of more good deeds? Write them on the blank lines.

	Monday	Tuesday	Wednesday	Thursday	Friday	Saturday	Sunday
Turned off the TV when I finished watching it							
Used both sides of my paper							
Helped recycle paper, cans, glass and plastic							
Didn't leave the water running while I brushed my teeth							
Picked up litter and threw it in the trash can							

## do's .....

1. Always turn the TV off when you're finished watching it.
2. Use sponges or washable cloth instead of paper towels to clean up messes.
3. Save all your newspapers, cans, and bottles. Help your parents recycle them.

## don'ts .....

1. Don't leave the refrigerator door open. Get what you want quickly and shut the door.
2. Don't leave the water running when you brush your teeth.
3. Don't ever think you're not important to our Earth.  
**You Are!**

### Fill in the blanks to find out how you can help protect the environment.

I can draw and color on \_\_\_\_\_ sides of my paper. I must remember to turn \_\_\_\_\_ the lights when I leave an empty room. This saves \_\_\_\_\_.

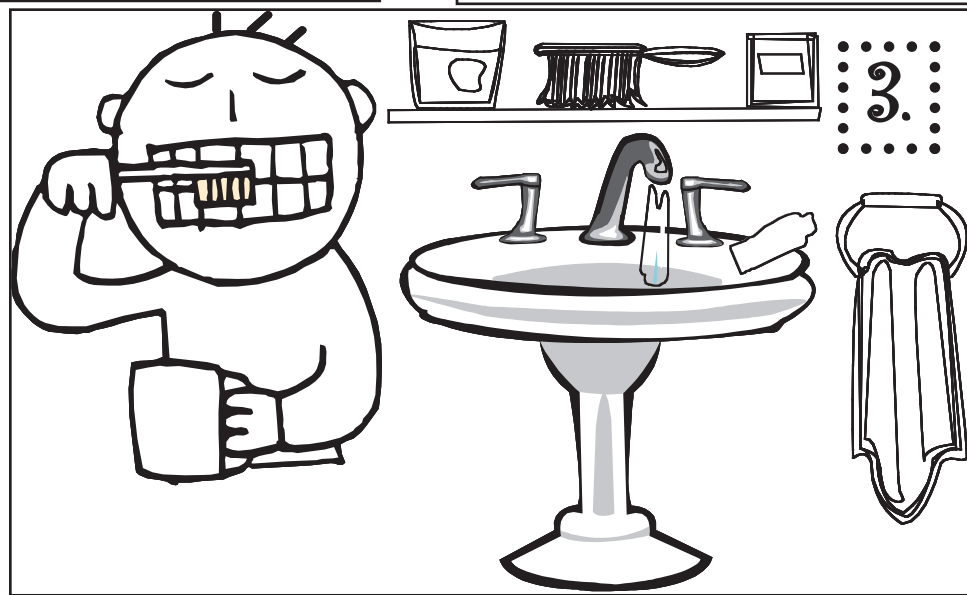
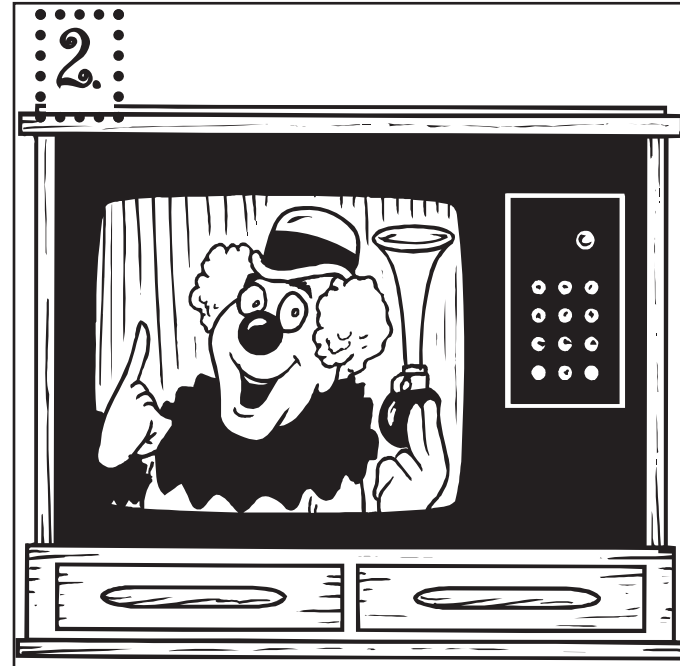
I can also \_\_\_\_\_ up litter on the ground and put it in the \_\_\_\_\_ can. It is important that I help \_\_\_\_\_ cans, bottles, and newspapers.

When I ride my bicycle, I don't \_\_\_\_\_ the air. I am important!

I can \_\_\_\_\_ save the environment!

ANSWERS: 1. both/two 2. off 3. energy/electricity 4. pick 5. trash/garbage 6. recycle 7. pollute 8. help

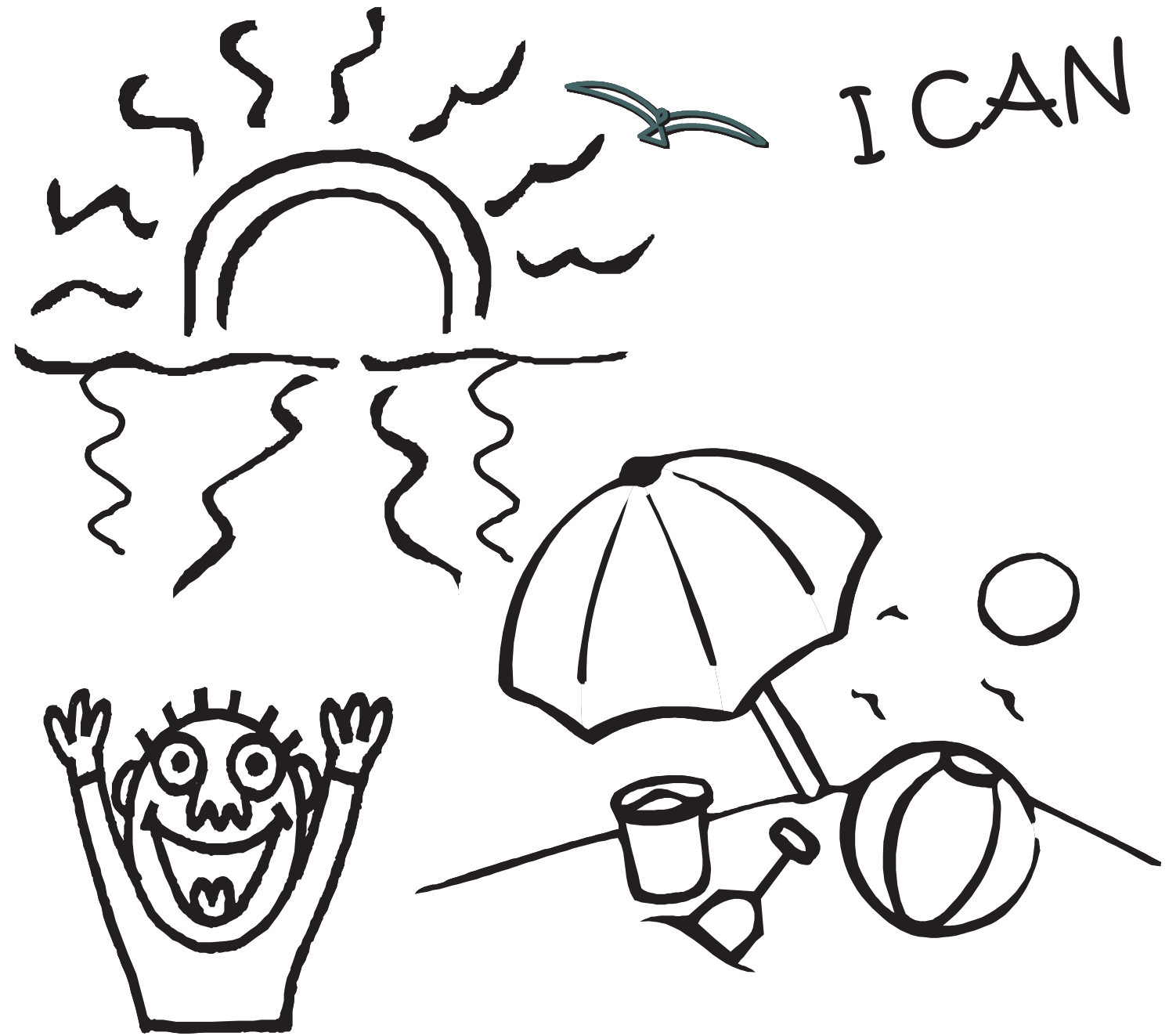
# What's wrong here?



**1. GARBAGE** is thrown on ground instead of in the Trash can. Always use the trash can and pick up trash when you see it.

**2.** TV is left on when no one's in the room. Always turn the TV off when you leave the room.

**3. WATER** is running while teeth are being brushed. Always turn off water while you're brushing your teeth.



*help protect our beaches, our rivers and our lakes.*

*help protect our air.*

*help protect our land.*

*The beaches, rivers, lakes, air, and land around us make up our environment.*

# KEEP MY NEIGHBORHOOD AND SCHOOLYARD CLEAN

# Keeping the Environment Clean



N	P	O	L	L	U	T	I	O	N	M	M	L	O	O	P	R	A	C
I	C	L	L	N	S	E	H	C	A	E	B	M	L	H	C	X	T	L
A	N	T	F	O	Z	W	D	P	J	B	Z	X	L	K	V	C	G	E
R	J	R	N	I	J	L	C	Z	K	B	L	G	K	T	E	H	L	R
D	R	J	L	T	K	B	P	L	A	S	T	I	C	T	Q	C	A	L
M	D	V	M	A	N	R	J	K	N	X	S	D	O	D	Y	Z	S	L
R	H	G	L	V	V	L	N	N	B	P	M	R	V	C	H	L	S	W
O	N	B	Z	R	R	L	Z	T	R	K	P	C	E	P	Z	R	K	V
T	E	R	B	E	S	B	B	A	N	N	L	R	I	V	E	R	S	F
S	I	I	M	S	Z	C	Y	G	R	E	N	E	X	G	M	R	K	C
K	G	D	P	N	W	E	H	B	D	V	M	L	J	T	R	Z	K	A
B	H	E	Y	O	R	W	S	O	H	R	A	N	M	H	K	K	F	M
B	B	A	W	C	H	Y	A	X	O	N	E	L	O	M	T	Z	Y	A
J	O	B	A	R	X	M	R	G	D	L	K	T	U	R	R	R	K	B
K	R	I	T	X	T	M	T	S	Q	P	Y	F	T	M	I	P	T	A
W	H	K	E	P	Y	X	E	M	A	T	Q	A	K	I	I	V	L	L
T	O	E	R	Y	C	K	G	P	X	B	A	N	R	H	L	N	N	A
T	O	K	R	D	A	X	E	X	D	G	R	I	N	D	Z	R	U	E
K	D	N	N	L	W	R	N	N	F	K	N	Q	R	Q	H	B	P	M

*If I see trash on the ground, I can toss it in the trash can.*

*Recycle aluminum cans, plastic and glass bottles, and paper, Okay?*

*I can save them at home and school, and help my parents recycle them.*

- Air
- Alabama
- Aluminum
- Beaches
- Carpool
- Conservation
- Energy
- Environment
- Glass
- Lakes
- Land
- Litter
- Neighborhood
- Paper
- Plastic
- Pollution
- Protect
- Recycle
- Ride A Bike
- Rivers
- Schoolyard
- Sprayer
- Storm Drain
- Trash
- Water

# Help Save Energy

## I CAN



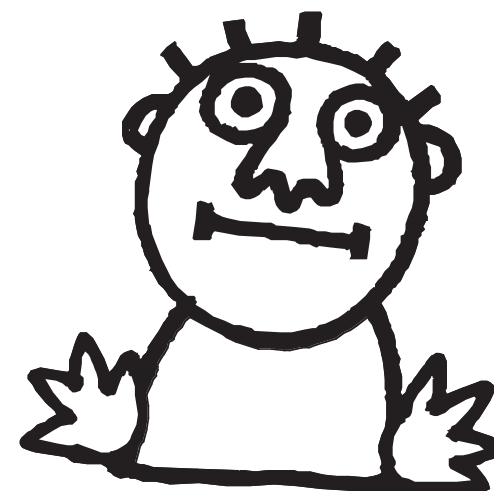
Turn off the lights when I leave my room.

Turn off the TV after I finish watching it.

Turn off the computer after I finish using it.



# HELP KEEP THE AIR CLEAN



I can ride my bicycle or walk to school.

I can take the bus or ride in a carpool.

Too many cars on the road pollute the air.



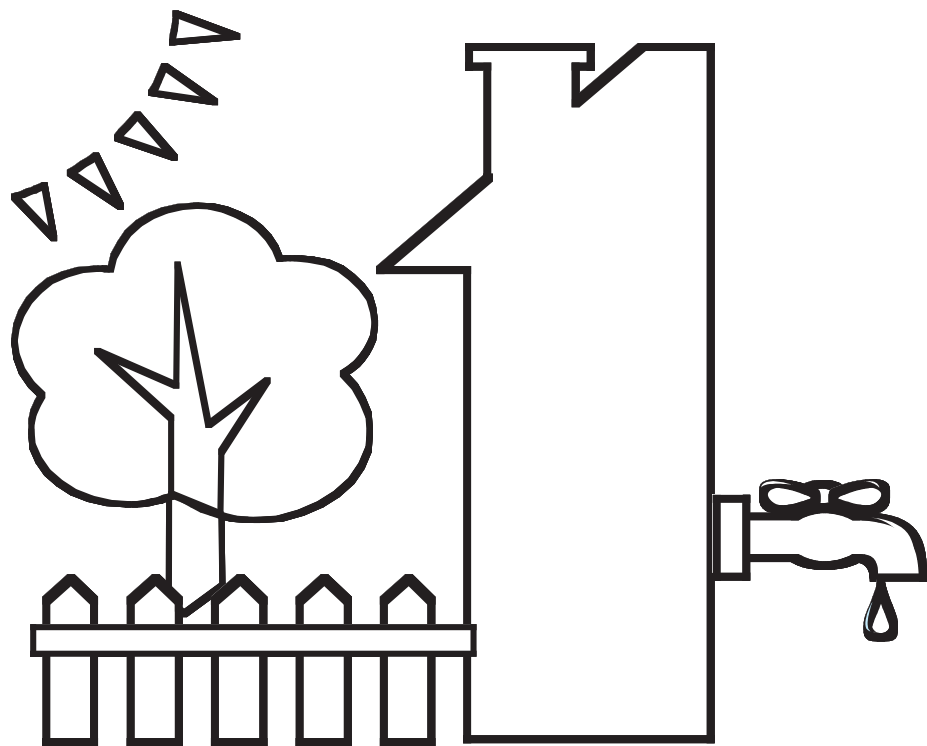
# I CAN

## Help Save Water

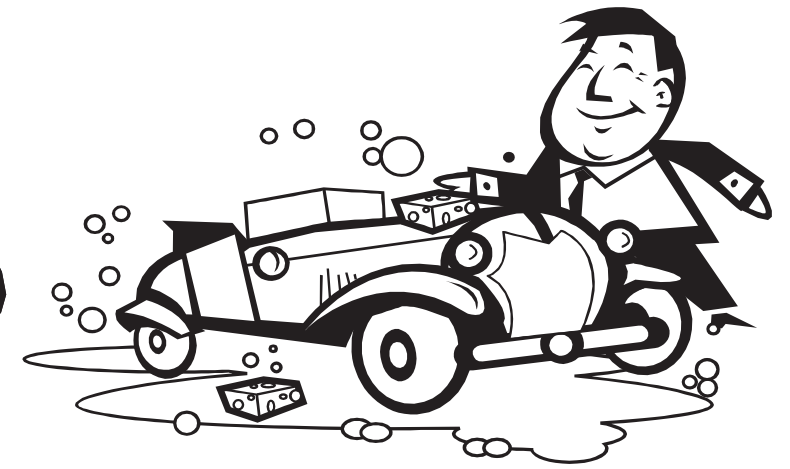
*I will turn off the faucet while brushing my teeth.*

*I can use a sprayer on the end of the garden hose.*

*I can help my parents repair a leaking faucet.*



## HELP PROTECT WATER



*When we wash the car, we will wash it in the yard or we can go to a car wash where the water is recycled and cleaned. This prevents pollution from reaching our rivers and streams.*

*I won't put trash, grass clippings or litter in a storm drain.*

