

Lead and Copper Rule Update

19th Annual ADEM Surface Water Meeting
October 27, 2016

Presenter: Dennis D. Harrison
Chief Drinking Water Branch

Goal: Provide latest information concerning
Lead & Copper Rule

Frequently Asked Questions

- What causes lead contamination in public drinking water?
- Which Public Water Systems (PWSs) have to test for lead?
- Is there an MCL for lead?
- Is there an MCLG for lead?
- How often do PWSs have to test for lead?



Basic Requirements

- PWSs must optimize their treatment systems to control corrosivity of the water they produce.
- PWSs must determine the levels of lead in customers' homes with preference given to homes with lead service lines or lead based solder in the home plumbing system.
- PWSs must rule out their water source as a source of significant lead levels.
- If lead action level is exceeded PWSs must take additional actions.



Monitoring Requirements

- New PWSs must monitor for lead once every 6 months for at least one year.
- After the first year of sampling, based on monitoring results and size of the PWS, sampling frequency can change to either once per year or once every three years.
- The number of samples required is based on the size of the PWS and the monitoring frequency.



Sampling Site Requirements

- Sampling sites are selected based on criteria set out in the LCR.
 - Tier One Sites
 - Tier Two Sites
 - Tier Three Sites
- The LCR prescribes specific sampling protocols.
 - From an interior faucet (cold water kitchen or bathroom sink)
 - First Draw – One liter
 - No point of use treatment devices – do not remove aerators
 - Use wide mouth bottles
 - No pre-stagnation flushing



Lead Action Level

- **There is no MCL for lead in the distribution system.**
- **Instead there is an “action level” (AL).**
- **The AL for lead is 15 ppb.**
- **If the 90th percentile sample is above 15 ppb then the PWS has exceeded the AL for lead.**

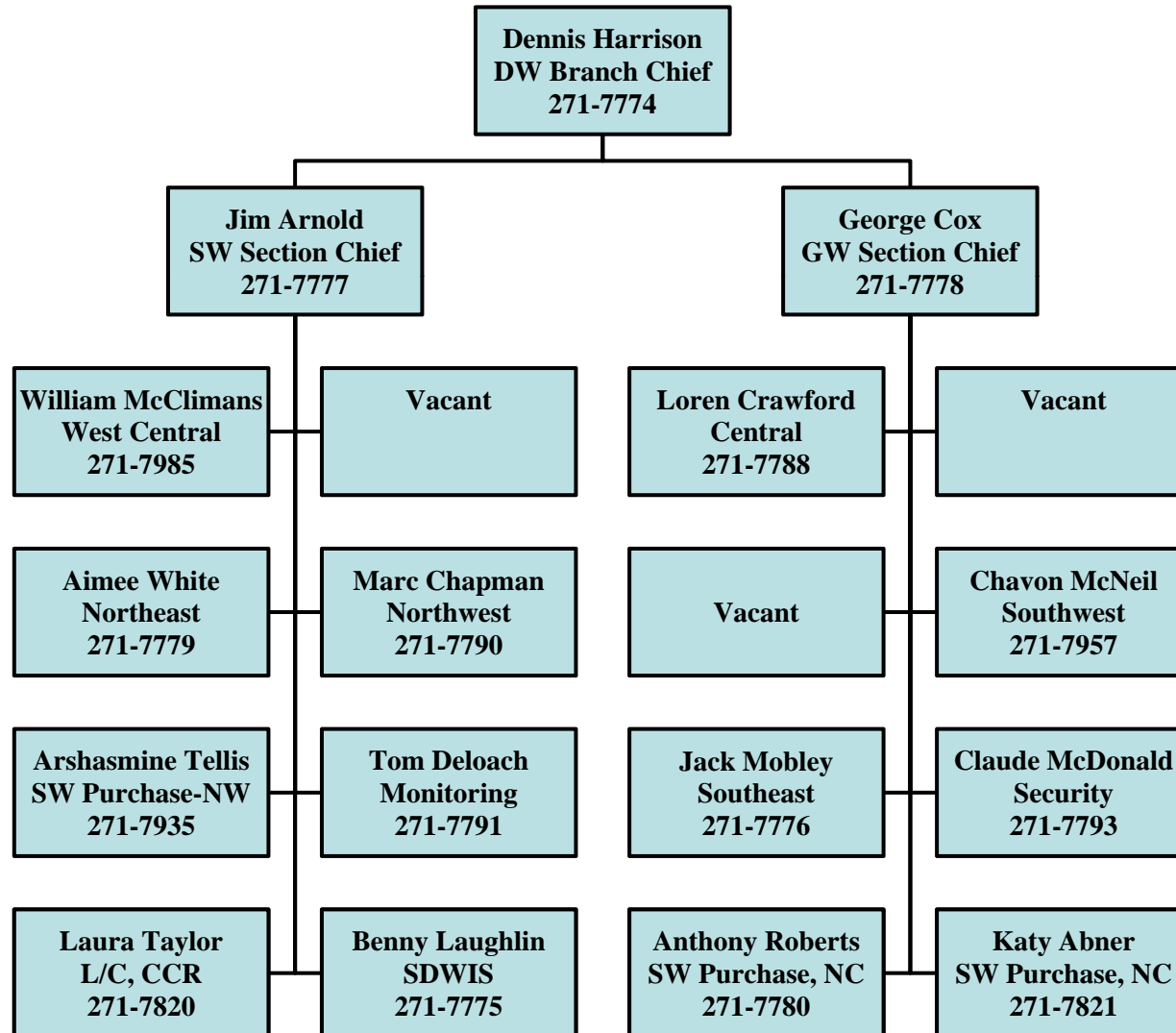


AL Exceedance Requirements

- Develop and implement a plan to optimize corrosion control.
- Do a public notice to all customers educating them about health risks due to lead exposure, including actions they can take to reduce exposure to lead.
- Replace lead service lines under the PWS's control.
- Offer to replace customer's lead service lines at an equitable cost to the customer.
- Monitor water quality parameters at sources and in the distribution system.



Drinking Water Branch Technical Staff



ADEM

Summary

Dennis D. Harrison
Chief Drinking Water Branch

ddh@adem.state.al.us

334-271-7774

adem.alabama.gov