



DEEPWATER HORIZON MC252

6/3/2010 20:00

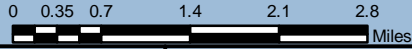
Baldwin County Division 1



88°0'0"W

Legend

- Verified Boom
- Deployed Hard Boom
- Hesco Boom
- Deployed Sorbent
- Proposed 6-04-2010



88°0'0"W



DEEPWATER HORIZON MC252

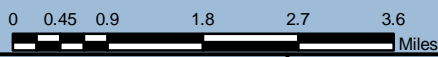
6/3/2010 20:00

Baldwin County Division 2

87°45'0"W

Legend

- Verified Boom
- Deployed Hard Boom
- Hesco Boom
- Deployed Sorbent
- Proposed 6-04-2010



87°45'0"W

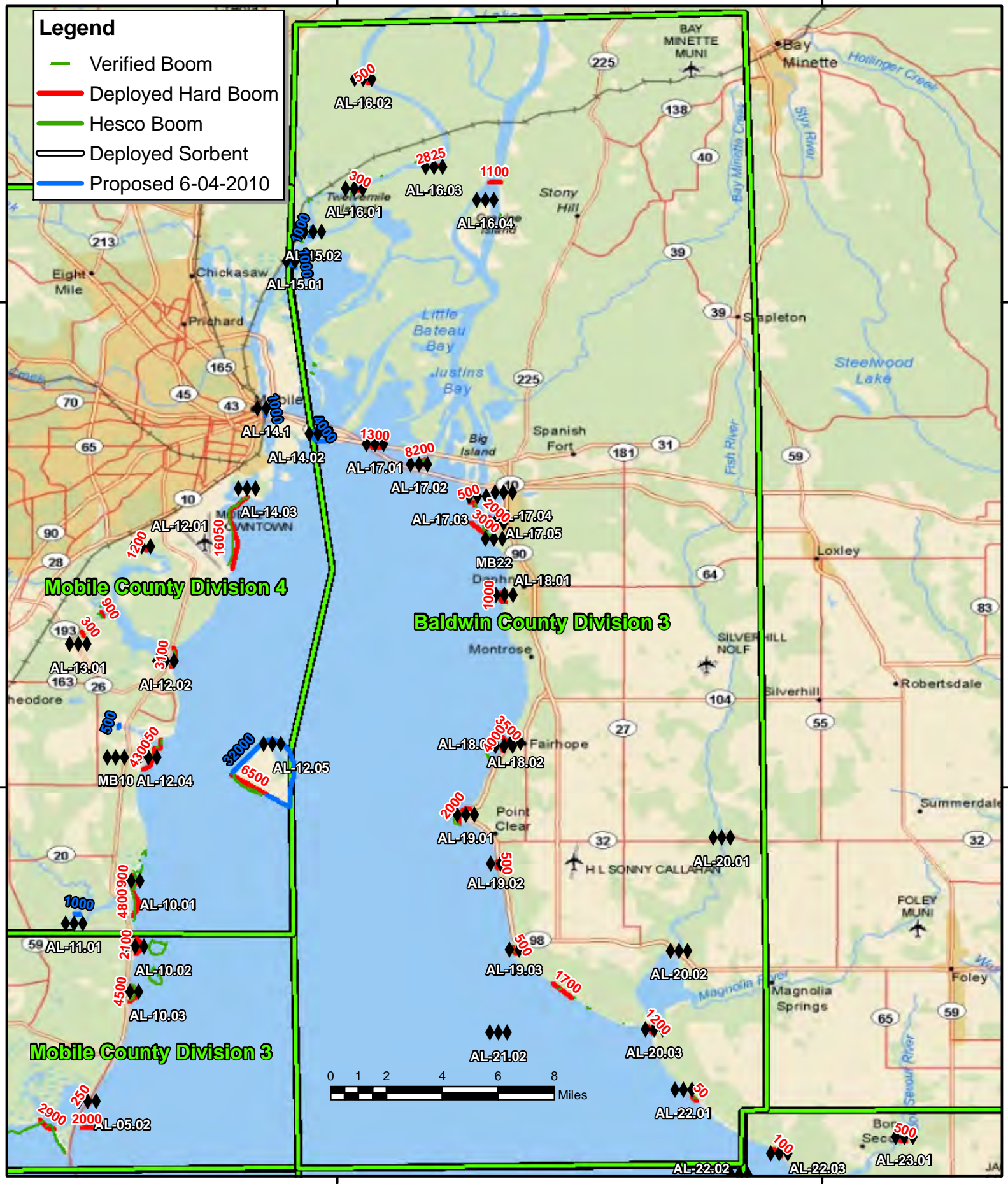
30°15'0"N

30°15'0"N



Deepwater Horizon MC252 Baldwin County Division 3

6/3/2010 20:00

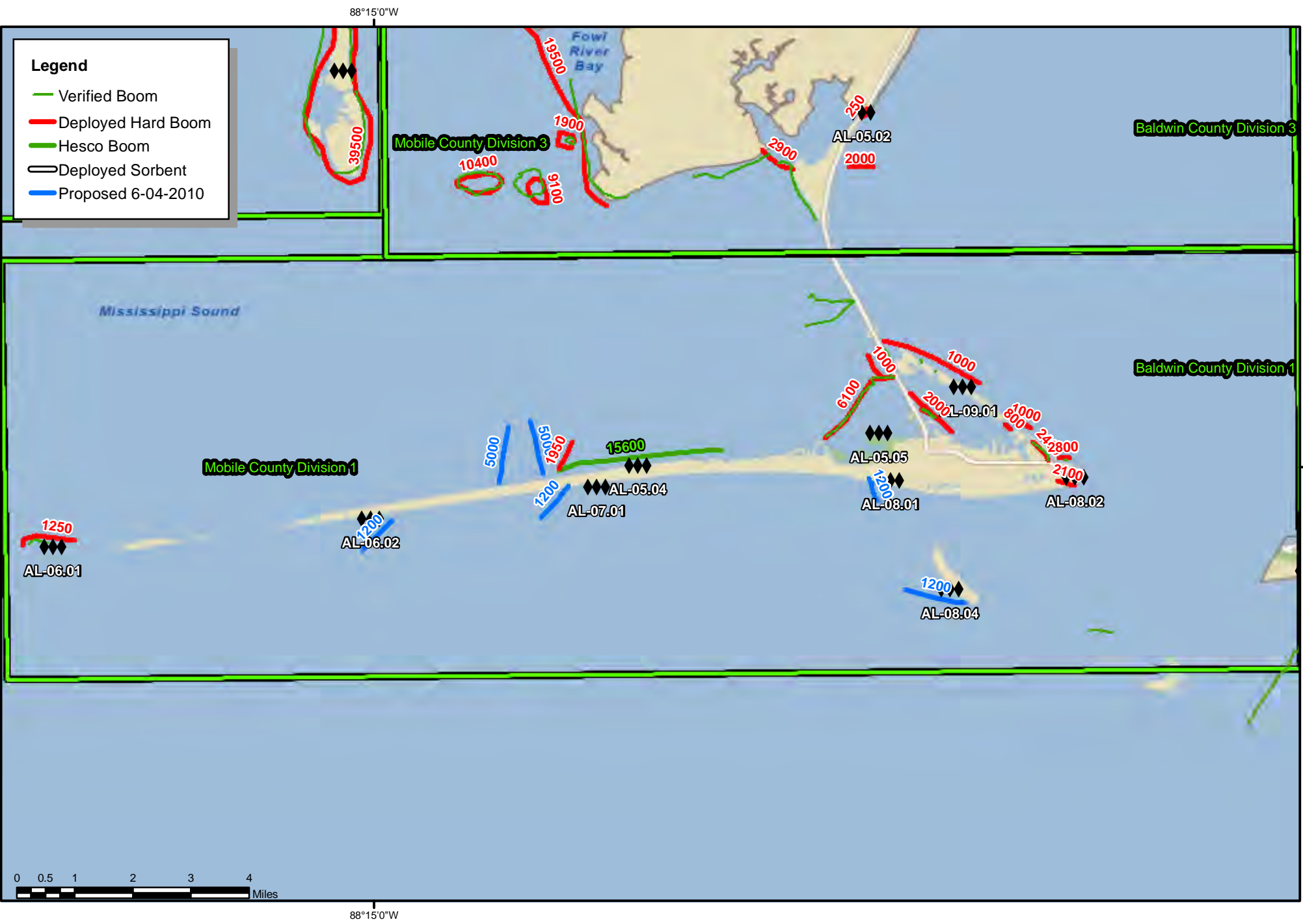




DEEPWATER HORIZON MC252

6/3/2010 20:00

Mobile County Division 1





DEEPWATER HORIZON MC252

6/3/2010 20:00

Mobile County Division 2



88°15'0"W



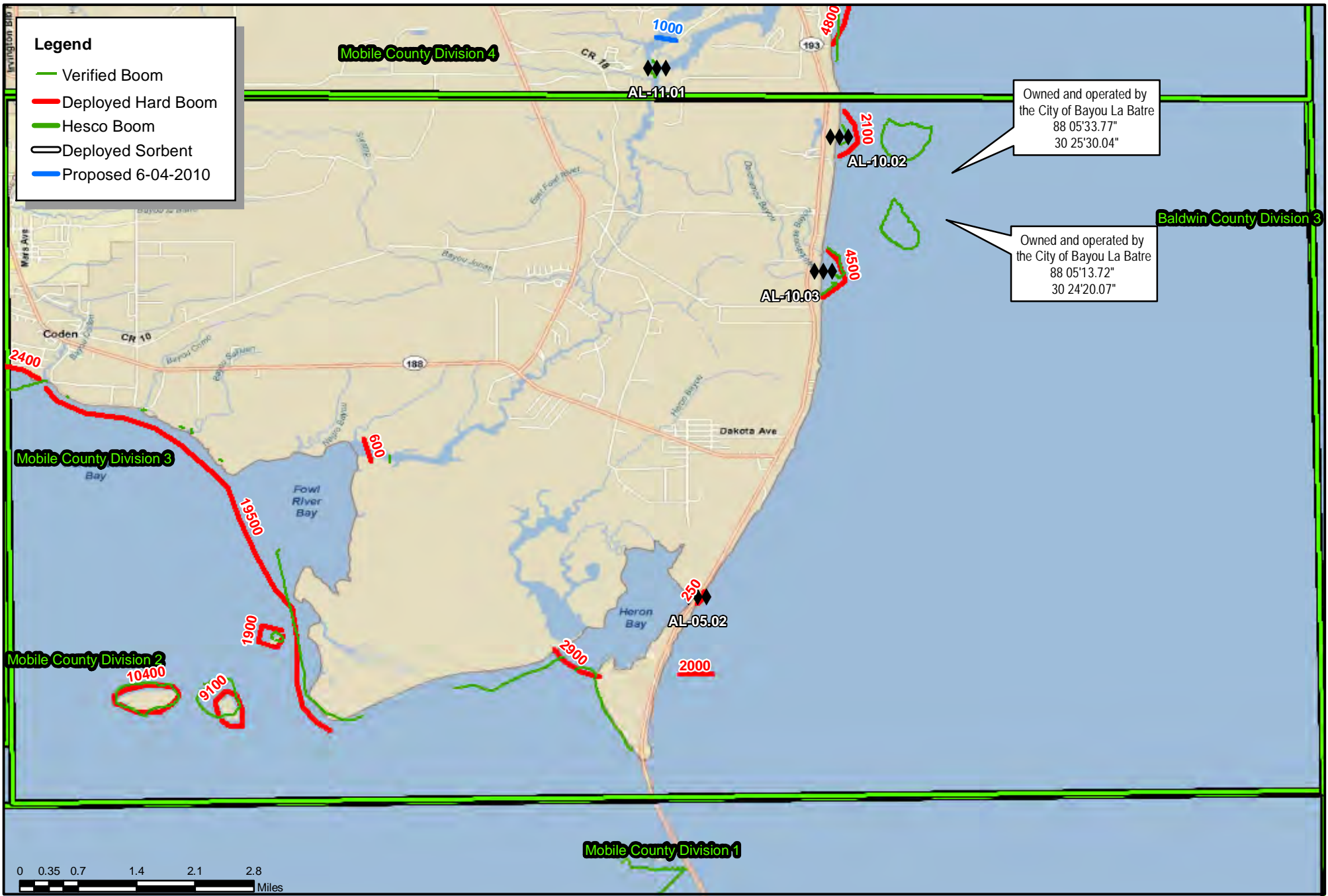
88°15'0"W



DEEPWATER HORIZON MC252

6/3/2010 20:00

Mobile County Division 3



- Legend**
- Verified Boom
 - Deployed Hard Boom
 - Hesco Boom
 - Deployed Sorbent
 - Proposed 6-04-2010

Owned and operated by
the City of Bayou La Batre
88 05'33.77"
30 25'30.04"

Owned and operated by
the City of Bayou La Batre
88 05'13.72"
30 24'20.07"

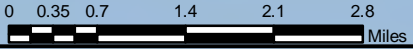
Mobile County Division 3

Mobile County Division 2

Mobile County Division 4

Baldwin County Division 3

Mobile County Division 1



Deepwater Horizon MC252
Mobile County Division 4
6/3/2010 20:00



Scale: 1:183,432

- Legend**
- Verified Boom
 - Deployed Hard Boom
 - Hesco Boom
 - Deployed Sorbent
 - Proposed 6-04-2010

