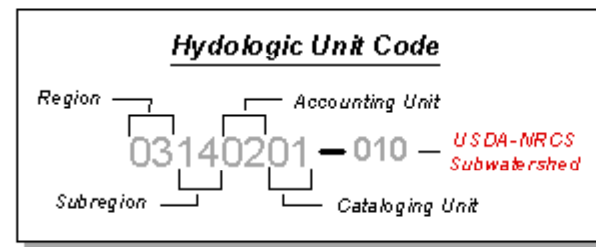
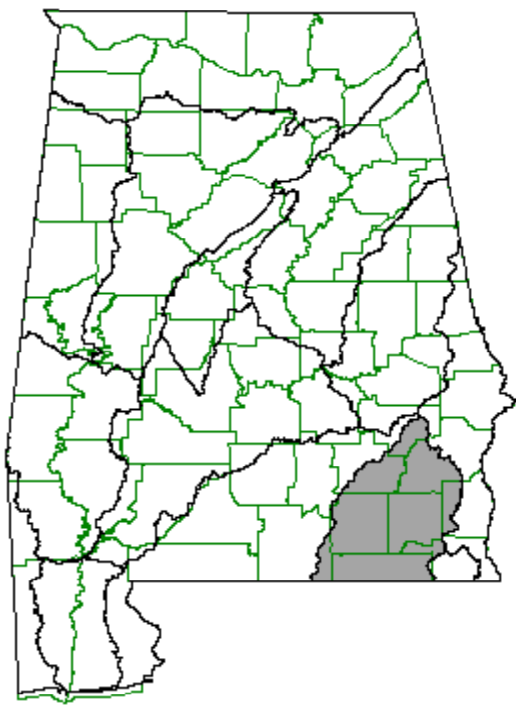


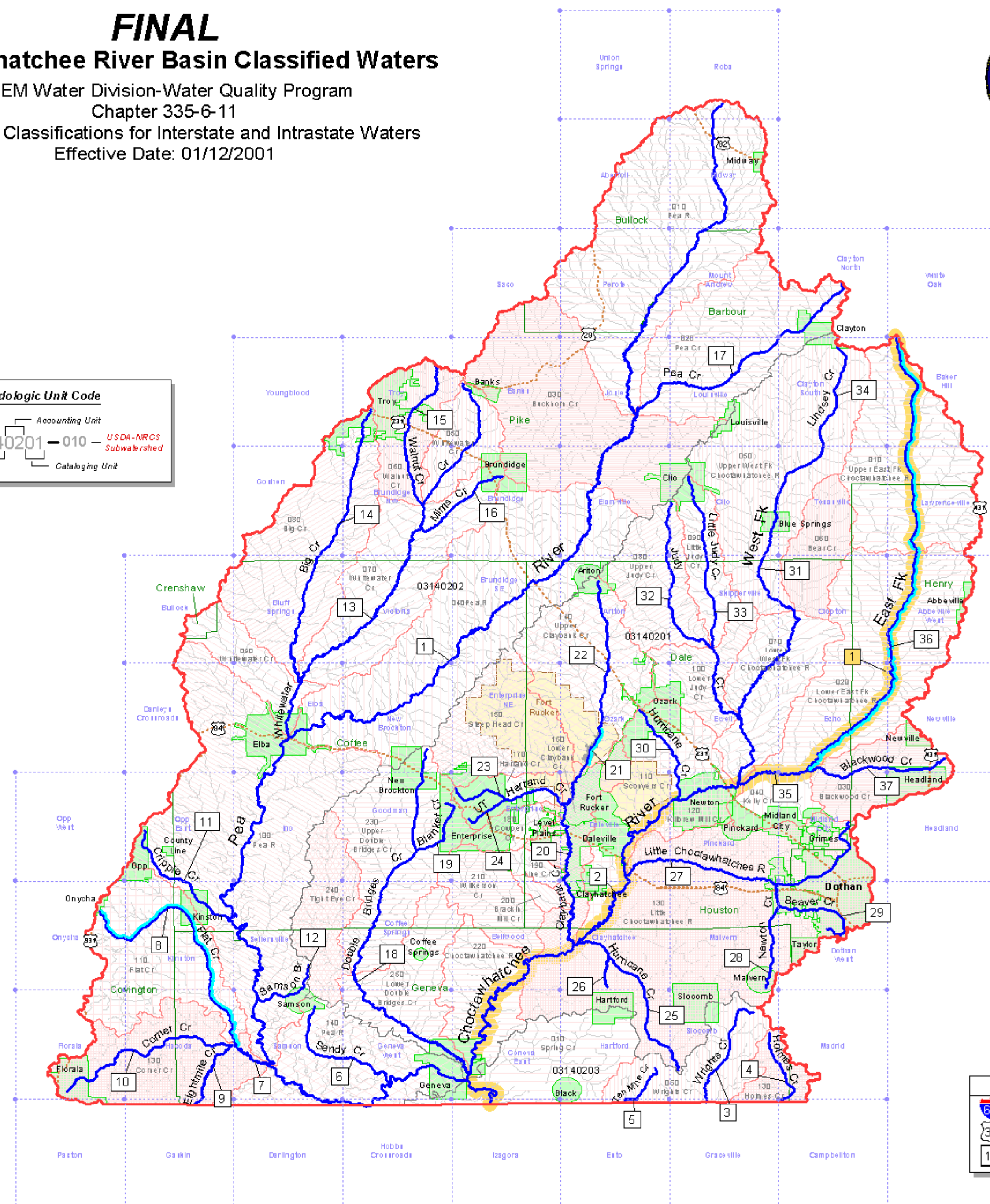
FINAL Choctawhatchee River Basin Classified Waters

ADEM Water Division-Water Quality Program
Chapter 335-6-11

Water Use Classifications for Interstate and Intrastate Waters
Effective Date: 01/12/2001



USGS Catalog No.	Quad Name	ADEM Map No.
31085-E3	Abbeville West	56SE
32085-A6	Aberfoil	86SW
31085-E6	Ariton	57SW
31085-G3	Baker Hill	70SE
31085-G7	Banks	72SE
31085-B7	Bellwood	30NE
31086-E1	Bluff Springs	59SE
31085-F7	Brundidge	58NE
31085-F8	Brundidge NW	58NW
31085-E7	Brundidge SE	58SE
31086-E2	Bullock	146NE
30085-H4	Campbellton	104SW
31085-B6	Claychochee	29NW
31085-H4	Clayton North	70NW
31085-G4	Clayton South	70SW
31085-F5	Clio	57NE
31085-E4	Clopton	56SW
31085-B8	Coffee Springs	30NW
31085-C6	Daleville	43SW
31086-D2	Danleys Crossroads	45NW
30086-H1	Darlington	17NE
31085-B4	Dothan West	28NW
31085-D4	Echo	42NW
31085-F6	Elamville	57NW
31086-D1	Elba	46NE
31085-C7	Enterprise	44SE
31085-D7	Enterprise NE	44NE
30085-H6	Esto	15NW
31085-D5	Ewell	43NE
31086-A3	Floral	32SE
30086-H2	Gaskin	17NW
31085-A7	Geneva East	30SE
31085-A8	Geneva West	30SW
31085-C8	Goodman	44SW
31086-F1	Goshen	59NE
30085-H5	Graceville	15NE
31086-A2	Hacoda	31SW
31085-A6	Hartford	29SW
31085-C3	Headland	42SE
30085-H8	Hobbs Crossroads	16NW
31086-C1	Ino	45SE
30085-H7	Izagara	16NE
31085-G6	Josie	71SW
31086-B2	Kinston	31NW
31085-F3	Lawrenceville	56NE
31085-G5	Louisville	71SE
31085-A4	Madrid	28SW
31085-B5	Malvern	29NE
31085-C4	Midland City	42SW
32085-A5	Midway	86SE
31085-H5	Mount Andrew	71NE
31085-D8	New Brokton	44NW
31085-D3	Newville	42NE
31086-B3	Onycha	32NE
32085-F3	Opelka East	32NE
31086-C2	Opp East	45SW
31086-C3	Opp West	46SE
31085-D6	Ozark	43NW
30086-H3	Paxton	18NE
31085-H6	Perote	71NW
31086-C5	Pinokard	43SE
32085-B5	Roba	86NE
31085-H7	Saco	72NE
31086-A1	Samsom	31SE
31086-B1	Sellersville	31NE
31085-E5	Skipperville	57SE
31085-A5	Slocomb	29SE
31085-F4	Texasville	56NW
31085-G8	Troy	72SW
32085-B6	Union Springs	86NW
32087-D4	Uniontown East	86NW
31085-E8	Victoria	58SW
32086-E6	Vida	58SW
31085-H3	White Oak	70NE
31086-G1	Youngblood	73SE



Highway Symbols

	Interstate Highway
	U.S. Highway
	State Highway

1-37 Choctawhatchee River Basin Classified Waters

Index	Stream	From	To	Classification
1	Pea River	CHOCTAWHATCHEE RIVER	Its source	F&W
2	CHOCTAWHATCHEE RIVER	Alabama-Florida state line	Its source	F&W
3	Wright Creek	Alabama-Florida state line	Its source	F&W
4	Holmes Creek	Alabama-Florida state line	Its source	F&W
5	Ten Mile Creek (Tenmile Creek) sp.	Alabama-Florida state line	Its source	F&W
6	Sandy Creek	Pea River	Samson (Its source)	F&W
7	Flat Creek	Pea River	Junction with Eightmile Creek	F&W
8	Flat Creek	Junction with Eightmile Creek	Its source	S/F&W
9	Eightmile Creek	Flat Creek	Its source (AL/FL stateline)	F&W
10	Corner Creek	Eightmile Creek	Its source	F&W
11	Cripple Creek	Pea River	Its source	F&W
12	Samsom Branch	Pea River	Its source	F&W
13	Whitewater Creek	Pea River	Its source	F&W
14	Big Creek	Whitewater Creek	Its source	F&W
15	Walnut Creek	Whitewater Creek	Its source	F&W
16	Mims Creek	Whitewater Creek	Its source	F&W
17	Pea Creek	Pea River	Its source	F&W
18	Double Bridges Creek	CHOCTAWHATCHEE RIVER	Its source	F&W
19	Blanket Creek	Double Bridges Creek	Its source	F&W
20	Claybank Creek	CHOCTAWHATCHEE RIVER	Lake Tholocco	F&W
21	Lake Tholocco	Dam	Its source	S/F&W
22	Claybank Creek	Lake Tholocco	Its source	F&W
23	Harrand Creek	Claybank Creek	Its source	F&W
24	Tributary of Harrand Creek	Harrand Creek	Its source	F&W
25	Hurricane Creek	CHOCTAWHATCHEE RIVER	Its source	F&W
26	Mill Creek (Cox Mill Creek)	Hurricane Creek	Hartford	F&W
27	Little Choctawhatchee River	CHOCTAWHATCHEE RIVER	Its source	F&W
28	Newton Creek	Little Choctawhatchee River	Its source	F&W
29	Beaver Creek	Newton Creek	Its source	F&W
30	Hurricane Creek (Dale County)	CHOCTAWHATCHEE RIVER	Its source	F&W
31	West Fork of Choctawhatchee River	CHOCTAWHATCHEE RIVER	Its source	F&W
32	Judy Creek	West Fork of Choctawhatchee River	Its source	F&W
33	Little Judy Creek	Judy Creek	Its source	F&W
34	Lindsey Creek	West Fork of Choctawhatchee River	Its source	F&W
35	East Fork of Choctawhatchee River	CHOCTAWHATCHEE RIVER	Blackwood Creek	F&W
36	East Fork of Choctawhatchee River	Blackwood Creek	Its source	S/F&W
37	Blackwood Creek	East Fork of Choctawhatchee River	Its source	F&W

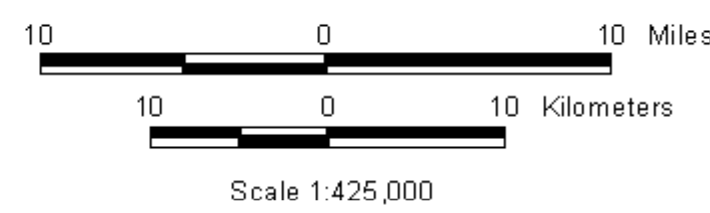
1 Nationwide Rivers Inventory (NRI)

Index	Waterbody	Location	ORVs	Comments
1	Choctawhatchee River & East Fork	From AL/FL stateline To headwaters	S, R, G, F, W	Scenic recreational stream of ecological significance; excellent water quality; Point Washington State Wildlife Management Area adjacent; Morrison Springs.

1 Outstandingly Remarkable Values > S = Scenery, R = Recreation, G = Geology, F = Fish, W = Wildlife
The NRI can be obtained from <http://www.nps.gov/rivers>

Swimming (S) Use Classification
Fish & Wildlife (F&W) Use Classification

- Counties
- USDA-NRCS Subwatershed-11 digits
- National Hydrography Dataset
- Cities and Towns
- USGS Cataloging Units-8 digits
- Ft. Rucker Military Reservation
- Nationwide Rivers Inventory (NRI) Waters
- Major Roads
- Primary road with limited access
- Primary road
- Ft. Rucker Military Reservation



Software: ESRI's Arcview™ 3.2
Extension: RTI's NHD-RTI
Avenue Script: R. Buuman's GraphTab.Ave
Projection: Geographic/Unprojected
Datum: NAD83
Date: 02/07/2001
By: Mike Rief-mjr@adem.state.al.us
ADEM Water Quality Branch

Disclaimer of Liability:
Neither the Alabama Department of Environmental Management or the State of Alabama nor any of the employees thereof, makes any warranty, express or implied, or assumes any legal liability or responsibility for the accuracy, completeness, or usefulness of any information contained on this map.